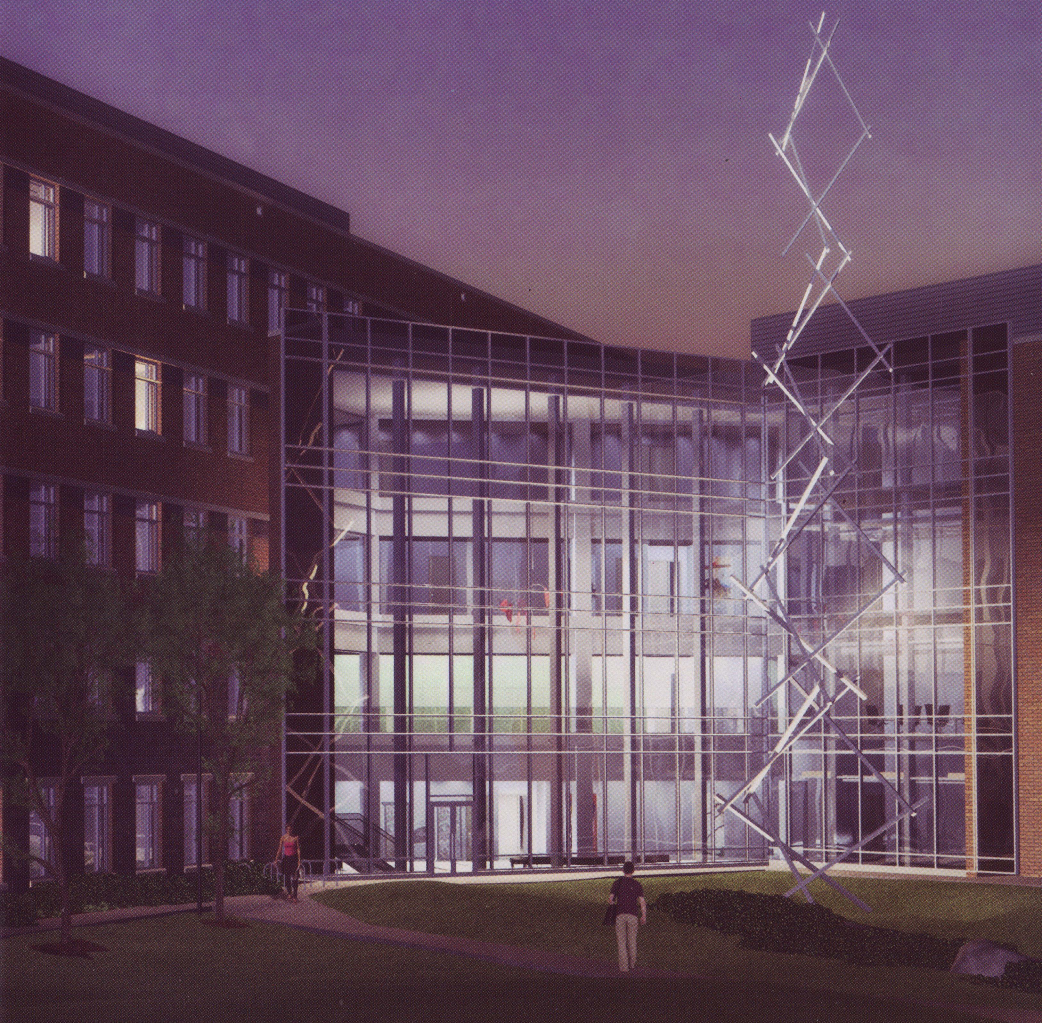


BUILDING THE FUTURE

...AT GEORGE MASON UNIVERSITY

PUBLIC-PRIVATE PARTNERSHIP TO DELIVER A NEW BUILDING FOR THE
VOLGENAU SCHOOL OF INFORMATION TECHNOLOGY AND ENGINEERING

PROJECT UPDATE
FALL 2007



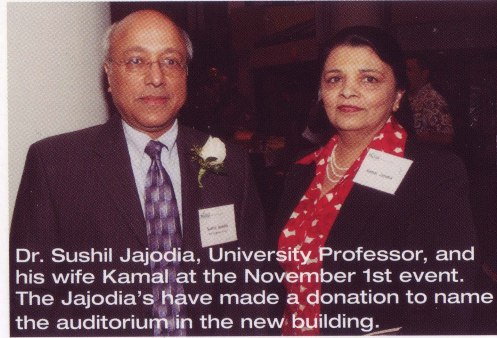
EDGEMOOR REAL ESTATE SERVICES, LLC
AN AFFILIATE OF CLARK CONSTRUCTION GROUP, LLC

Events Held to Commemorate Start of Academic VI / Research II

TWO SEPARATE EVENTS HAVE BEEN HELD TO COMMEMORATE THE START OF THE ACADEMIC VI / RESEARCH II BUILDING, WHICH WILL BE THE NEW HOME TO THE VOLGENAU SCHOOL OF INFORMATION TECHNOLOGY AND ENGINEERING AT GEORGE MASON UNIVERSITY. The 180,000 square foot building is currently under construction and is scheduled to be delivered in 2009.

In July, an official groundbreaking ceremony was held on the project site. The morning event was highlighted by remarks from Dr. Alan Merten, George Mason University President; Dr. Lloyd Griffiths, Dean of the Volgenau School; and Geoffrey Stricker, Managing Director with Edgemoor Real Estate Services.

On November 1, Mason hosted an event celebrating the start of the project.



Dr. Sushil Jajodia, University Professor, and his wife Kamal at the November 1st event. The Jajodia's have made a donation to name the auditorium in the new building.

Attended by over 650 guests and held at the Center for the Arts, attendees were given the opportunity to network with students and faculty of the Volgenau School and view a video on the building's key features. The highlight of the evening included Dean Griffiths' announcement that the School received a commitment from Sushil and Kamal Jajodia for a donation to name the auditorium. This generous gift is a major addition to the School's \$10 million fundraising campaign.

Representatives from Edgemoor, Mason and Clark break ground in July 2007. From L to R: Juan Rivera, Tom Calhoun, Bill Talbert, Alan Merten, Sid Dewberry, Ernst Volgenau, Lloyd Griffiths, Geoff Stricker.



KEEPING IT GREEN: Environmentally Friendly Features of Academic VI / Research II

PROTECTING AND PRESERVING OUR NATURAL RESOURCES IS A CAUSE THAT HAS RECEIVED INCREASING ATTENTION OVER THE PAST FEW YEARS. GEORGE MASON UNIVERSITY HAS RECENTLY TAKEN STEPS TO ENSURE THAT THE CAMPUS USES SUSTAINABLE PRACTICES. Part of that effort is to ensure that new buildings are designed and constructed with the environment in mind.



Preserving our resources: The New Academic VI / Research II building incorporates environmentally friendly features.

Academic VI / Research II will be the first new academic building on campus to incorporate these principals. This includes energy efficient systems and environmentally friendly construction methods. Future editions of the Project Update will highlight features of the building that make it "green."

CEI ENGINEERING DEPARTMENT TOURS PROJECT SITE

Six members of the Volgenau School's Civil, Environmental and Infrastructure (CEI) Engineering Department were treated to a tour of the project site on September 18th. This early stage of construction was particularly interesting to this group due to the installation of geopiers for the building's foundation system. Geopiers were required due to poor soils on a portion of the site that required an alternative foundation system. A relatively new foundation product, geopiers provide cost and schedule advantages over other alternatives.

MEMBERS OF MASON'S
CEI ENGINEERING
DEPARTMENT TOURED THE
PROJECT SITE DURING
THE INSTALLATION OF
GEOPIERS, SHOWN IN THE
PICTURE BELOW.



CONSTRUCTION UPDATE

When Mason students returned this Fall, they may have noticed a change in the campus landscape – what was a parking lot is now a bustling construction site.

After the groundbreaking in July, the construction fence was installed, the site was cleared and trailers and utility connections were installed. Additional site preparation and foundation work were the major activities during the month of September. In October, major milestones included the installation of elevator pits, additional utility work and foundation walls.

Once this work is complete, steel erection is scheduled to begin in late November and will take approximately 14 weeks.



PROJECT WEBCAM

Don't forget to check the building's construction webcam for the most up-to-date images of the project. The link is located at <http://ite.gmu.edu>.

BUILDING FACTS

- 180,000 square feet including classrooms, labs, and lecture halls
- Lease space for Corporate Partners
- Co-located academic and research space
- First Public-Private Education Facilities and Infrastructure Act Project at a Virginia university

DID YOU KNOW?

In 2005, Ernst and Sara Volgenau gave a gift of \$10 million, the largest personal donation in the history of George Mason University. In recognition of their generosity, the School was named The Volgenau School of Information Technology and Engineering.

THE TEAM


Key members of the Turnkey Design-Build team include Edgemoor Real Estate Services (Development Services), Clark Construction (General Contracting) and HOK (Design).

QUESTIONS?

Contact us at GMUA6R2@edgemoordevelopment.com.

Edgemoor
REAL ESTATE SERVICES

7500 Old Georgetown Road
Bethesda, Maryland 20814

Printed on Elemental
Chlorine Free, 50%
recycled / 15% post
consumer waste paper

PLEASE RECYCLE