

Extra

BROADSIDE

Vol. 24, No. 4

George Mason University
The State University in Northern Virginia

February 12, 1979

GMU Has A Law School

By Andrew B. Cseplo

GMU's five year quest for a law school has finally come to a successful end. Both houses of the General Assembly last week overwhelmingly approved the university's merger with the International School of Law (ISL) in Arlington.

The State Senate voted Monday to approve the merger 28 to nine. The House of Delegates followed with its own stamp of approval two days later. The House vote in favor of the merger was 84 to seven. The bill is expected to be signed by Governor John Dalton.

The vote of the state legislature ends a battle which began last July. It was then that the GMU Foundation, a non-profit organization, announced it was planning to purchase the Kann's Building which houses the ISL. The purchase was to pave the way for the merger of GMU and the unaccredited private law school.

Previously, the university had sought permission to start a law school twice before, in 1974 and 1976. It was turned down both times. One of the principle reasons for the refusal was the cost involved. Proponents of the merger attempt argued that there was very little cost involved this time since the university was seeking to merge with an existing law school.

The proposed merger was dealt a serious setback in November when the State Council of Higher Education (SCHE) issued its report on the subject. In the report,

the Council recommended to the General Assembly that the merger not be approved. The report questioned the need for another state Law school in Virginia.

According to Vice-President of Academic Affairs Robert C. Krug, it is not often the General Assembly ignores the SCHE's recommendations. The approval of the merger — not to mention the final votes by which it passed — therefore proved surprising to many of those involved.

GMU President George Johnson, in fact, admitted he was not very optimistic about the merger's chances following the SCHE report. Johnson credited "the work of an enormous amount of people" with the success of the ISL merger, including members of the Board of Visitors, northern Virginia legislators, other citizens of the area, and finally the ISL students themselves.

Others said that Johnson himself was largely responsible for the final outcome.

The only one of the 19 delegates from northern Virginia to vote against the merger was Robert Thoburn (R-Fairfax). Thoburn justified his position by saying that a merger of the two institutions would cost Virginia taxpayers more money. He felt that approval of the measure would lead to a further expansion of government. "As long as we continue such things," said Thoburn, "people shouldn't complain about taxes."

Thoburn added that he felt the



Photo by Andrew Cseplo

The Kann's Building in Arlington will now house the George Mason University School of Law.

American Bar Association should have accredited the law school. And if not, then graduates should be allowed to take the bar exam in Virginia indefinitely. Thoburn went on to say that he had drawn up a resolution to set up a commission to study law school accreditation procedures in Virginia. The bill was killed in committee.

He also feared the ISL would now lose its uniqueness. It was originally set up to be a conservative Christian law school, Thoburn said. By merging with GMU, the law school would "meld" into the political hue of

See LAW SCHOOL, Page 2

Nessen Conference Opens Lecture Series

By John T. Spence

Aspiring journalists and GMU debaters will be on hand today to participate in a mock press conference held by Ron Nessen, former press secretary to President Ford, in the Student Union's main lobby at noon.

This event is the first in the spring series arranged by the Student Faculty Lecture Series. Mr. Nessen will be asked questions during the press conference by area college journalists who were invited to participate, as well as by a group of GMU debaters.

In addition to being a presidential press secretary, Mr. Nessen was the recipient of the George Foster Peabody Broadcasting Award. From 1956 to 1962 he was an editor for United Press International and then a news correspondent for NBC news until 1974. Mr. Nessen is the author of *It Sure Looks Different From The Inside*.

A large crowd is anticipated for Mr. Nessen's appearance. The same is expected when Jody Powell, current press secretary for President Carter, visits GMU on March 6. The Student-Faculty Lecture Series has arranged for six speakers to visit campus during the spring semester. Besides Nessen and Powell, the series also features such notables as Mary Margaret Green, editor of the Fairfax Star; Colman

McCarthy, *Washington Post* writer and author of *Disturbers of the Peace* and *Inner Companions*. Two other well known authors have also been asked to participate in the lecture series, playwright Imamu Amiri Baraka (Leroi Jones), whose plays include *The Dutchman* and *The Slave*; and Toni Morrison, author of *Song of Solomon* and *The Bluest Eye*. Baraka will appear on Feb. 20, Green on Feb. 27, Powell on March 6, McCarthy on March 20, and Morrison on April 11.

This may well be Chairman Connie Bedell's last semester as head of the Student-Faculty Lecture Series. She has put a great amount of effort into organizing a list of guests as well-known as these. The fact that Powell has accepted the invitation is in itself no mean feat. The speakers represent both national and local perspectives.

INSIDE BROADSIDE

Editorials	4
Chess	8
Review of "Chapter Two"	9
Sports Rap	13
Trivia Quiz	14
Sports Profile	17
Backside	19



Photo by Bill Rook

Kathy Kleha, a sophomore, is currently the leading scorer on the women's basketball team. For an interview with Kathy turn to page 13 in the Sports section.

Business Department Receives \$10,000 Grant

By John T. Spence

The Business Department of GMU recently received a \$10,000 grant from the Northern Virginia Board of Realtors. The money, which will be used to establish a scholarship fund, was left by the late Emanuel A. Baker, Sr., former president and founder of Town and Country Realtors, in order to improve professional real estate education programs.

Several groups sent proposals to the trustees, including Virginia Polytechnic Institute, the United Negro College Fund, and GMU. Through the efforts of Dr. Lloyd M. DeBoer, dean of business administration, and more specifically Dr. Robert Johnston and Dr. John Hysom, both assistant professors of business administration, GMU's proposal was the best received by the trustees.

Mr. Baker died in 1975, and at that time the money was sent to the Northern Virginia Board of Realtors Credit Union. Eventually the fund expanded, and in 1977 the trustees openly solicited proposals for the use of the money from organizations who could carry out the desires of the late Mr. Baker.

Graduate and undergraduate business students majoring in real estate and urban development are eligible for assistance through the fund. The money will continue to expand as it accumulates interest and Town and Country Realty adds to it. This new scholarship fund is another indication of the continued growth of GMU.



Dr. Robert Krug receives check for \$10,000 that will be used in a scholarship fund for business students. From left to right is Emanuel A. Baker, Jr., Mrs. Emanuel A. Baker, Sr., Daniel K. Macklin, Dr. Robert Krug, and Edwin Kaler.

Law School

FROM PAGE ONE

the rest of the state, he added. Without accreditation by the ABA, the ISL's graduates are restricted from taking the bar exam in most states. The Virginia Bar Examiners Association is currently allowing ISL graduates to take the bar exam in Virginia, but has said it will end that exception unless the school is accredited by 1980. The main obstacle to the ISL's accreditation has been its heavy reliance on tuition income. The ABA's concern has been that the law school might, at some point, have to lower admissions stan-

dards to keep enrollment up. If enrollment were allowed to fall, then the school would suffer financially and perhaps reduce standards in other areas. The merger with GMU would give the law school greater "stability," and accreditation is expected to be easier to obtain. Many of the students eligible to graduate this May plan to hold off until the law school is accredited. Accreditation may be as near as August of this year. Despite its heavy reliance on tuition income, the ISL's law library has continued to grow. It now boasts over 96,000 volumes.

That is the fourth largest among DC area law schools. In 1976, the ISL library was larger than 60 of the libraries of the 164 accredited law schools in the U.S. In other areas, faculty salaries have continued to go up, as have the average LSAT scores of the applicants. The ISL was started with 26 students in 1972 — ironically the same year in which George Mason College severed its ties with UVA and became a university. As the law school grew, it moved from site to site in downtown DC. Finally, it settled into its current location in Arlington.



This notice serves the purpose of announcing that the S.G. Used Bookstore will be returning books to the original owners that were not sold in the University Lounge.

The Hours of operation will be:

FEB. 12-FEB 16

9 am-2pm

FEB 12 - FEB 13

5:30-7:15 pm

Kappa Sigma/ Student Government disclaim any responsibility for books not picked up by

2 pm FRIDAY FEB 16

The PICKETT INN

good food, good company, generous drinks

open monday thru saturday

11:00 am - 1:00 am

live, mellow entertainment

thursday, friday and saturday nights

sandwich luncheons

steak cheese
crab cake sandwiches
cheeseburger & hamburger platters
club sandwiches
reuben sandwiches
oysters (in season)

platter dinners

european cuisine
fried shrimp platter
fried clam platter
veal cutlet
chopped steak

located in the pickett shopping center
on the little river turnpike

VIEW POINT

At Long Last— A Law School

GMU took a giant step forward this week with final approval of the Mason-ISL merger by the State Senate and House of Delegates. Pending Governor Dalton's final signing of the bill, which is expected to come soon, GMU will finally have its law school. With this step and the expected approval of doctoral programs, the university has become a major force among state institutions of higher learning. Suddenly GMU is more than just the "college up the street," to be mentioned in the same breath with community colleges and fly-by-night operations.

Five years ago, this school was housed in only four academic buildings, a lecture hall and a small library. Then an era of rapid expansion began, both in physical size and in the number and quality of programs offered. The approval of the law school and hopefully of doctoral programs temporarily ends the program expansion. We are now about to enter into another era of physical growth, with the completion of Academic II-B, Academic III, more dormitories and a new student union.

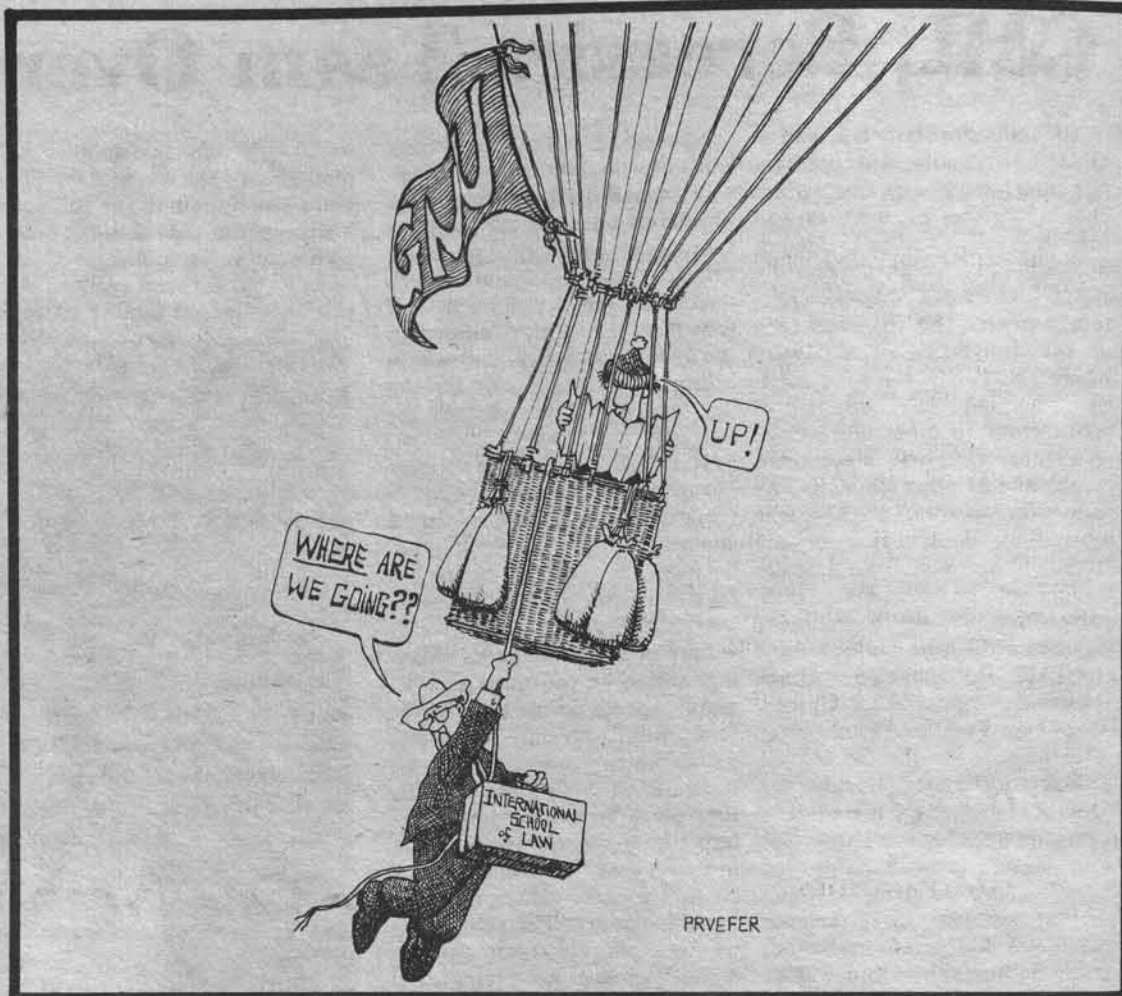
The acquisition of the ISL is more than just physical or program expansion. A law school or a medical school lends a certain prestige to a university that few other programs can match. Perhaps it is because graduates in these fields tend to become very visible in society. For whatever reasons, however, the acquisition of a law school has almost instantly raised Mason to "major university" status.

The GMU-ISL votes in the legislature might possibly be the beginning of a dramatic shift in Virginia politics. After a long period in which anything north of the Occoquan River was seen as almost "foreign," it appears that state legislators have finally realized that Northern Virginia can no longer be ignored. The margin by which the merger passed through both houses tends to bear this out. Other votes, such as the local option sales tax to benefit Metro which recently passed the Senate, also lend credence to the belief that Richmond is willing to "play fair with Fairfax."

It would be impossible to give too much credit to the ISL students themselves for the success of the merger. Legislator after legislator complimented them, stating that their lobbying job had been one of the major factors in overcoming the opposition of the State Council on Higher Education. Expecting "second-rate students," as one legislator put it, delegates and senators were surprised to find intelligent, articulate advocates stating the case for merger clearly and succinctly.

This merger should benefit both institutions. GMU will gain both programs and prestige; the ISL will survive and almost certainly gain accreditation. ISL graduates will gain continued eligibility to sit for the Virginia bar exam. Northern Virginians will gain as well. There will soon be a state-supported law school in the area. The benefits of the merger are obvious. What is also obvious is the tragic waste that would have occurred had the merger been denied. The legislature is to be commended for recognizing that and approving the acquisition of the ISL.

One last word. GMU has grown at a very rapid pace for several years now. We must careful not to lose control of that growth. A period of consolidation might be in order. Let's make sure that all our new programs are up to the quality of the old ones, and then let's work to upgrade the quality of everything we offer, so that one day everyone will recognize GMU as a top-flight school.



Letters To The Editor

A Waste Of Money

To the Editor:

I feel that, as a student and a taxpayer, it is necessary to comment about the "improvements" accomplished on the north wing of the cafeteria during the semester break.

Whoever the administrator was who suggested this "improvement" missed the boat, for not only is the project a waste of taxpayers money but it is also poorly constructed and built of shoddy materials.

I estimate that \$10,000 was spent on this project and this money, invested properly, could finance any number of projects far more important than the present partitions in the cafeteria.

Supposing, for argument's sake, that the wanton expenditure of \$10,000 for improvements to the cafeteria was justified. It seems to me that one would purchase first-class construction materials and employ first-class construction techniques in the building of these improvements.

This was not the case, however. The materials utilized in this project are inferior at best. Many of the supporting 4X4 pillars are splitting from dry-rot. This results from the improper

seasoning of the wood. Much of the wood throughout the project is also filled with knots and gouges; again, revealing its poor quality. It would require a moderate amount of effort to purchase wood that is not filled with knots and gouges, and,

considering the amount of money spent, the additional cost of acquiring good wood would be well worth it.

The construction of the addition is, however, a different matter. It makes no difference

See WASTE, Page 5

BROADSIDE

Andrew Cseplo
Editor

Mike Rappaport
News & Sports Editor

Gabriele Glang
Features Editor

Waits May
Business manager

Bud Delphin
Advisor

Tuan Tran
Arts Editor

Myrna Garza
Photography Editor

John T. Spence
Associate News Editor

Lisa Siegrist
Associate Arts Editor

News & Features Staff: Gerri Beckman, John Ernst, Jodie Musolino, Dan Parnham, David Radick, Mike Rogers, Susan Rook, Dominick Salemi, Libby Tart, Fred Williamson

Arts Staff: Dan Buckelew, Paul Henry, Bill Madden, Julie Morrison, Scott Nichols, Jeannie Rickwald, Ken Shipp, Ara Tramblian, Tom Welsh, Kevin Zetena

Sports Staff: Dee Carey, Cindy Huguley, Mark Richards, Mike Stafford, Joe Willmore

Photography Staff: Barry Boyd, Jim Ognibene, Lee Strang, Paul Watters

BROADSIDE, GMU's student newspaper, is published every Monday during the semester except during exams and school holidays. Letters from the university community are welcomed and must be typed, triple spaced, signed and received by noon Thursday for the following edition.

The opinions appearing in **BROADSIDE** are those of the editorial staff or the specific authors and do not reflect the views of the university or the students.

BROADSIDE reserves the right to edit all material submitted. The staff office is located in room 345 of the Student Union Building, 4400 University Drive, Fairfax, Va. 22030. Telephone: (703) 323-2168 or 323-2637.

Lousy Aim

To the Editor:

P. Guda slightly misses the mark. At \$2.25 last term's semesterbook is cheaper than lunch, a diploma, or a new hat. Still available at the bookstore.

David Ide,
Co-Editor of
*Passions in Search of
the Penneplain*

Deserving The Best

To the Editor:

Although I am now removed from direct contact with GMU activities, I am often able to observe campus life through BROADSIDE with a critical and humorous perspective.

Take, for example, the article entitled "Work Site Dangerous" in the January 29 issue. It talked about the construction site around Academic IIB, with "cranes unloading steel, pouring concrete, and lifting other heavy loads overhead." Because the area is so dangerous, "No Trespassing" signs have been posted, the article states, but faculty and

students persist in using the area. All persons were warned that they may not walk or drive in this dangerous area.

That is, except for handicapped students in cars. We'll let them drive by buildings from which building materials sometimes fall. We'll let them drive among the "trucks and bulldozers hauling and pushing soil and rock."

After all, the handicapped have to get the best parking spaces at any cost, don't they? We wouldn't want them to get tired walking to their classes, now would we?

John P. O'Hanlon
College of William and Mary



Photo by Andrew Cseplo

Students at the ISL celebrate the success of the merger campaign. Legislators gave the ISL students much of the credit for the final outcome of the merger debate.

Waste

FROM PAGE FOUR

how excellent the quality of materials utilized in a project is. If the undertaking is poorly constructed, then the finished product looks terrible.

Finally, it seems to me that if expenditures of this nature were being pondered, student input should have been requisitioned. Student opinion is vital to any

university and keeps the university vibrant as a leader in the community and active as a

centre of higher education. Fiscal responsibility and prudent management, as well as a willingness to be receptive to new and better ideas, illustrate to the public that the university can grow and pioneer without the frivolous expenditure of funds.

Francis M. Vaccarella

New Organization Forms

By Mike Rappaport

Circle K International, the largest collegiate organization in North America, is forming a chapter at GMU. Circle K is a service club associated with the Kiwanis International, and was founded at Washington State University in 1936. There are

currently over 700 chapters of the organization located at schools throughout the United States and Canada.

Circle K tries not to limit itself to any one service activity, working with disadvantaged youth, delinquents, the mentally retarded and the physically

handicapped, among other projects.

GMU's chapter of Circle K will hold an organizational meeting this afternoon at 1:00 P.M. in the Music Room on the second floor of the Student Union. Anyone unable to attend who would like more information should call Phil Myers at 534-5367.

Counseling Center Services

STRESS MANAGEMENT FOR STUDENTS

Being Offered by
THE COUNSELING CENTER

WHEN: Mondays, starting February 12 for 6 weeks 1:00-2:30 PM

WHERE: Room 364, Student Union

HOW: Register in Room 364 Student Union or call 323-2165
NO CHARGE TO GMU STUDENTS

RETURNING WOMEN STUDENTS

..... Available for you: The R.R. & R. CENTER
..... Open all day Fridays (plus additional hours listed below*)

Drop by the Counseling Center lounge, Rm. 364 (Student Union Building.) RELAX, RECHARGE, and use available RESOURCES relevant to Returning Women. (Books, pamphlets, bibliographies.) R.R. & R. Center is also a place to meet others who share mutual concerns. *Hours: Mon. 8:30 a.m.-1:00 p.m., Tues. 8:30 a.m.-11:00 a.m., Wed. 4:30 p.m.-8:00 p.m., Thurs. 8:30 a.m.-12:00 p.m., Friday-All day.

INTERNATIONAL STUDENTS

An informal group where international students can meet and form a common bond for understanding and coping with cultural adjustments. We will focus on developing the skills necessary for academic success.

WHEN: Tuesdays, starting February 13 For Four Weeks, 1:00-2:00 PM

WHERE: First meeting in Conference Room A, Student Union Building. Call 323-2165 for further information.

NO FEE

LONELINESS

A ONE-DAY WORKSHOP

being offered by

THE COUNSELING CENTER

The experience, effects and potential value of Loneliness will be explored, along with ways of coping with and eliminating loneliness.

WHEN: Friday, February 16 From 10:00 A.M.-3:00 P.M.

WHERE: Counseling Center, Room 364, Student Union

HOW: Sign up in Room 364, Student Union or call 323-2165 to register.

NO CHARGE TO GMU STUDENTS



Student/Faculty LECTURE SERIES Spring 1979

Sponsored By

Student Government Activities Committee

Today, Monday, February 12 - Ron Nessen

STUDENT UNION BUILDING - 12 NOON

Former Press Secretary to President Ford. Mr. Nessen was the recipient of the George Foster Peabody Broadcasting Award. UPI Editor, 1956-1962. News correspondent NBC News, Washington, D.C. - 1962 - 1974. Author of "It Sure Looks Different From The Inside."

Tuesday, February 20 - Imamu Amiri Baraka

LECTURE HALL #1 12 NOON

Author. Books are "The Dutchman" and "The Slave." Baraka won the off Broadway award for best American play of 1964. Baraka is visiting professor of English at George Washington University.

Tuesday, February 27 - Mary Margaret Green

STUDENT UNION BUILDING - 7:00 P.M.

Editor of "The Fairfax Star." Ms. Green has been with "The Star" for eleven years. She joined the Metro staff in 1973.

Tuesday, March 6 - Jody Powell

STUDENT UNION BUILDING 12 NOON

Press Secretary to President Carter. Mr. Powell is a southern gentleman from Vienna, Georgia, and a journalist. Jody Powell's presentations will be mock press conferences in which two hundred (200) high school students will participate.

Tuesday, March 20 - Colman McCarthy

LECTURE HALL #1 - 12 NOON

Author, Journalist, Mr. McCarthy is a veteran writer for the "Washington Post." He was the recipient of the Faith and Freedom Award and the Journalism Award from the Legal Aid Society. His books are "Disturbers of the Peace and Inner Companions."

Wednesday, April 11 - Toni Morrison

LECTURE HALL #1 - 12 NOON

Author. Books are "Song of Solomon" and "The Bluest Eye." Ms. Morrison is an editor of Random House.

Tuesday, April 17 - John Irving

OFF CAMPUS - 7:00 P.M.

Author. Books include "The World According to Garp."

The Committee

Dr. Robert Holt, Psychology

Dr. Fred Williams, Alumni

Dr. Allen Mattes, Economics

Mrs. Irene Anichini, Fine & Performing Arts

Dr. John English, Business

Ms. Susan Shreve, English

Dr. Debra Bergoffen, Philosophy

Ms. Ruth Kerns, Fenwick

Dean Leon Boothe, College
of Arts & Sciences

Connie Bedell, Chairman

Pat Castellucci, Assistant to the Chairman

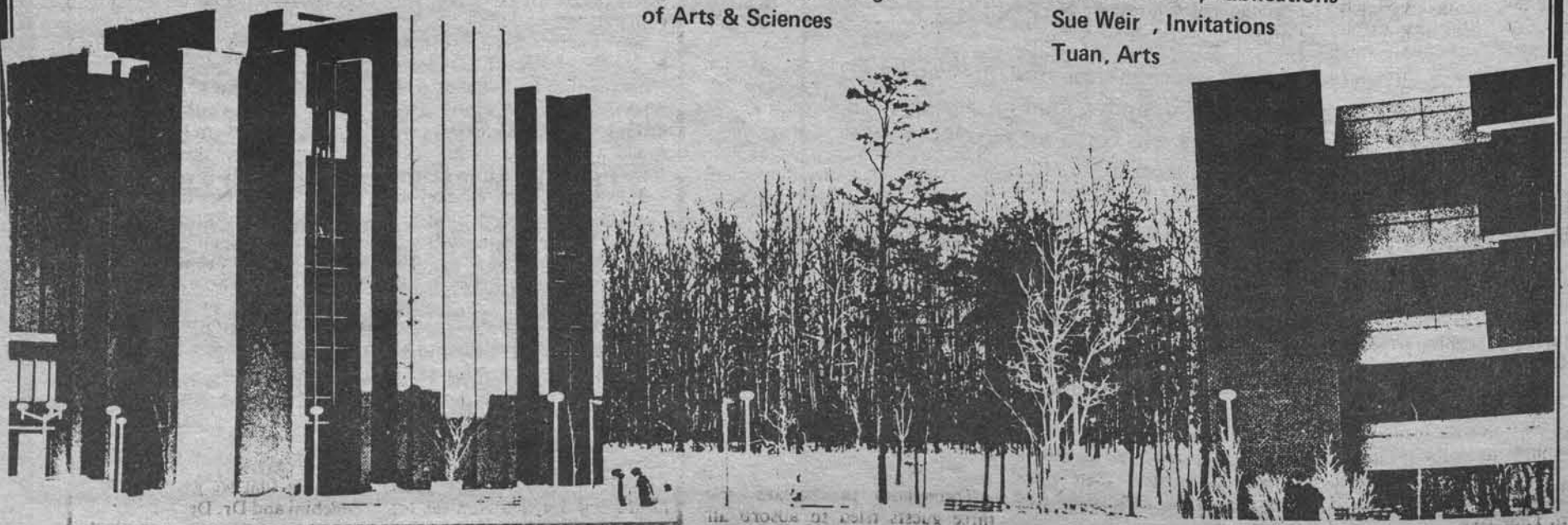
Rick Evert, PR

Hank Skelsey, Business Manager

Tom Lemmon, Publications

Sue Weir, Invitations

Tuan, Arts



BROADSIDE FEATURES

Black Student Alliance Roundtable

By Jody Musolino

A feeling shared by most black students attending GMU is that the school does not offer enough interests to hold them there.

This was the subject of deep controversy last spring, when the Black Student Alliance (BSA) claimed that GMU was practicing racism. They stated that there have not been an adequate number of black students enrolled, and once enrolled, the curriculum is not sufficient to educate the black students.

distinguished black women who all specialize in black studies of some kind. They agreed to come as a favor to Anthony-Welch, since they were in Washington for conferences and various other scholarly activities. Anthony-Welch felt that having these ladies present to speak on their interests, would stimulate a productive discussion on what the students feel to be the basic problems with "survival" as a black student at GMU.

The guest panel consisted of three remarkable women in relation to the work they have undertaken on behalf of their race

The discussion attracted about thirty people, most of whom were black students; there were also some members of the faculty and administration, as well as a few white students. From the very beginning, the panel created a relaxed atmosphere which made the students comfortable to express their emotions openly and freely.

After listening to three different students speak it was apparent that they all felt animosity towards the school as a whole because of pressures they have faced being one of 300 black students in a university consisting of 10,000 students. One student said, "I tried to find someone to share my ideas with and relate to, but there was no one to listen to me. This semester I said someone's going to listen to me, so I sit at the front of the class and I speak up." The girl was almost in tears while she told of her struggles in the first two semesters of her college career.

Andrew Evans, the admissions counselor for minority students, was a major contributor to the discussion and seemed to know almost as much about what was going on in the students' heads as they themselves did. He stressed the need for GMU to begin more programs and projects to bring in and retain more black and other minority students. "In the 80's there will be less kids in college—so fewer minorities will be going to college. Schools like Mason are going to be in trouble if they don't start attracting black students."

"Schools like Mason are going to be in trouble if they don't attract black students."

The black students feel that they are not well represented in the faculty and administration. Some stated that having more blacks in these areas would help the students find their direction, thus leading them onto a more solid education. A student remarked about the manner in which black students are evaluated by their professors: "Most instructors went to predominantly white schools. They do not see things in the black perspective that we see it in. So they grade papers in their point of view, and it is graded down."

Throughout the session, the three guests tried to absorb all

that was being said in order to summarize it, and give advice for the students to improve the school system. Johnson told them that "YOU must have a sense of power. And you must love yourselves and one another before anything can change. Once you have that basic love and respect, then you can find ways to get the knowledge." Anthony-Welch added, "Once one has a joy about oneself—one can take it home and share it. If we could share more realities, we would be better off."

The guests as a group advised the students to keep making demands of the curriculum and to be active. They asked them to think about their link to Africanism. They repeatedly stressed how important it is to strive to know yourself and your foundation. Johnson worded it in this fashion: "One has to understand one's past in order to decide where one is to go. It becomes your responsibility (as

students at GMU) to organize yourselves and work toward a goal."

The students left the room with heavy thoughts, but perhaps also with a little bit of encouragement and insight into reality.

This roundtable discussion took place at a convenient time: this is the nation-wide celebrated Black History Month. Anthony-Welch is busy scheduling speakers and events for the month of February. Professor T. Benjamin of Howard University will speak on the Afro-American Artists. Also coming to speak are Roy Jefferson, formerly the Washington Redskins, and Olufunmilayo who will give a lecture and demonstration on West African Dance. Dean Robert Owens of Howard University will be speaking on Blacks in Higher Education. A confirmed program sheet will be circulated with all the details.



Lillian Anthony-Welch

Photo by Myrna Garza

Since the time of this racism claim, the black students have not spoken out on these issues. Until now, when they had the opportunity to express their feelings about being black at GMU at a Roundtable Discussion sponsored by the Minority Affairs Office.

and culture. Betty Parker is a professor of English at Northwestern University in Chicago. She has just finished editing a book entitled *Sturdy Black Bridges: Visions of Black Literature*. Parker's major area of expertise is black women writers.

The discussion was held last Friday, February 2, from 3 until 5 PM. Lillian Anthony-Welch, Director of the Minority Affairs Program, was fortunate enough to have as her guests three very

A second guest, Ernestine Wilson is responsible for the opening and direction of the Edward Blime School in Chicago. It is not an ordinary elementary school however, but one that developed out of a need to educate black children from an African perspective. The school teaches all of the basic courses expected of an elementary school plus those that are African oriented, such as the Nairobi language, black history and Afro-American music and literature. The school is a private institution and currently has 55 students; it is still quite young.

The third guest, Josie Johnson, is currently working with students at Fisk University in Nashville, Tennessee. She is very interested in students finding their black roots, so that they may find themselves.

Brothers & Sisters

By Diogenes

Diogenes has nothing to report this week. Possibly due to the snowstorm, no one submitted any items. Remember, this is YOUR column. Any fraternities or sororities wishing to submit items, please send them to Diogenes, BROADSIDE Room 345, S.U.B. by noon, Thursday.

Debate Team Tallies

By Susan Rook

The GMU Debate Team tied a debate record at the Naval Academy Debate Tournament on Feb. 1-3, 1979. The tournament has been held for 21 years and GMU was only the second school to clear all three teams in the elimination rounds.

Warren Decker, Director of Debate, took 3 teams to this major Varsity tournament. The teams were John Euchler/Joe Willmore, Bill Layden/Carla Ward, and Rob Duston/Susan Rook.

The Debate Team brought 5 additional trophies back to GMU. All three teams had a 5-3 win-loss record for the pre-elimination rounds.

The Euchler/Willmore team beat the team from Johns Hopkins University in the octo-final round. This GMU team dropped in the quarter-final round after losing to the team from West Virginia University.

The other Varsity team of Layden/Ward dropped in the octo-final round after losing to West Virginia University. The Junior Varsity team of Duston/Rook which unexpectedly went into the elimination rounds also dropped in octo-finals after losing to the team from Tennessee on a 2-1 decision. Two of the GMU debaters brought back individual speakers awards. Euchler won the 10th place award and Layden won the 6th

place speakers award.

The performance of the debate team at a major national tournament is witness to the excellence of the program. Decker commented, "It was a really great feeling to listen to the announcement of the finalists and have GMU announced 3 times. It is especially gratifying when all of the team members will be back next year and 2 of the 6 are first year debaters. We have garnered a high level of respect from Universities throughout the country."

Irene Anichini, Assistant Director of Debate, was very pleased with the team's performance at the Navy Tournament. She commented "We rarely get people with prior debate experience. The proud showing of GMU debaters against people with lots of prior experience shows the strength of the squad. GMU's victories also emphasize the fact that a sound educational background is very influential in an intellectual exercise such as debate."

When sophomore John Euchler, a top debater on the squad, was asked about the reason for the successes of the squad he said: "While the debaters put a great deal of individual time preparing for the tournaments, our success so far is largely due to the excellent coaching that we get from Ms. Anichini and Dr. Decker."

Post-Mortem: Anatomy Of A King-Hunt

By David Radick

To help those who couldn't figure out last week's problem, we offer this week an autopsy of the solution, complete with diagrams to help the reader get the knack of notation. Starting from the first diagram below, the

solution runs: 8.BxP(f7)check! Ke7 (see diagram.)

The dislocation of black's king is a desirable thing indeed but where is white to put his Queen? On b3, its present square, it is attacked by black's Knight, and if the Queen goes to d5, the only free square, black may be able to survive after Nf6 and Pd6,

and not only that, but the Queen would have to desert the advanced Bishop. Deciding that a good offense is the best defense, white goes for the jugular: 9.NxP(e5)!! NxQ(b3) 10. Nd5chKd6 11. P(a)xN(b3)!! (See next diagram.) Having given at the office, white keeps on giving till it hurts.

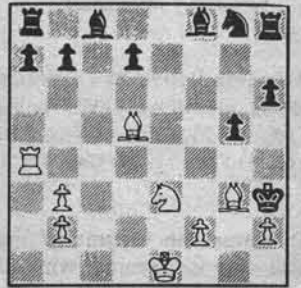
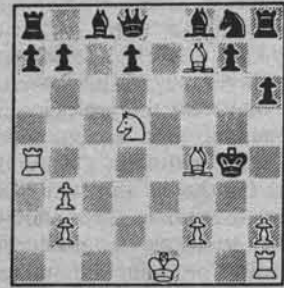
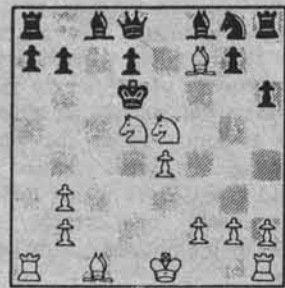
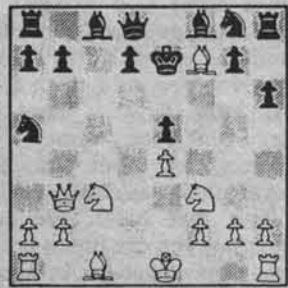
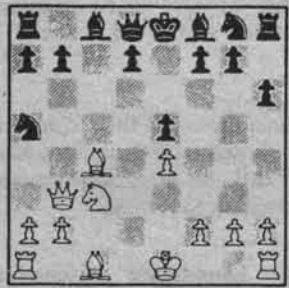
(Diagram)
11. . .KxN(e5). Note that if

Kc5, Be3ch chases the King back. But what if 11. . .Nf6, surely a sturdier defense? Then follows 12.Nc4ch! Kc6 (Kc5 loses even quicker) 13.Na5chKb5 14.Nc3ch

Kc5 (forced) 15.Pe5!! and black will die in the center. The actual game continued: 12.Bf4ch Kf5 (Kd3?? 14.Bg6 mate!) 14.Pg4ch KxP(g4). (See next diagram.)

Diagram
The rest is going through the motions: 15.Ne3ch Kh3 16. Rg1 Qh4 17. Rg3ch Qxg3 (on KxPh2, 18. Rg2ch Kh1 19.Bd5, Ke2 or Rh2ch win) 18. BxQ(g3) (again a mate threat) g5 19.Bd5! (See next diagram.)

Diagram)
Black cannot stop the coming mate with Bg2. Black resigns.



Basic Educational Opportunity Grant

By John Besecker

In the last issue of BROADSIDE, details were presented concerning the increased availability of financial aid for the academic year 1979-80, especially for students of middle income families. Here are some additional tips concerning the federally-sponsored Basic Educational Opportunity Grant (BEOG) which you cannot presently obtain through the GMU Financial Aid Office, though this information may affect many GMU students.

Under normal circumstances, any student can apply for the BEOG (remember, this is a grant and need not be repaid-ever) using the financial aid form supplied at the financial aid office. However, if your circumstances have changed from the year in which eligibility is calculated (ie, the 1979-80 grant award is based upon 1978 income, ordinarily), you should file for the BEOG in a completely different way.

If any of the changes below have occurred since 1978, this article applies to you:

- A. For students who are classified as dependents:
- (1) Did parents become separated or divorced?
 - (2) Did a parent, whose 1978 income was considered, die?
 - (3) Did a parent whose 1978 income was considered, experience a loss of employment for a period of at least ten weeks in 1979?
 - (4) Did a parent whose 1978 income was considered suffer some sort of disaster or disability that disrupted income for at least ten weeks in 1979?
 - (5) Did a parent whose 1978 income was considered experience a loss

of unemployment benefits in 1978 or 1979?

- B. For students who are classified as independent:
- (1) Did you become separated or divorced?
 - (2) Has your spouse of a parent, whose 1978 income was reported when filing for a Basic Grant, died?
 - (3) Has your spouse, whose 1978 income was reported when filing for a Basic Grant, died since the filing of the Basic Grant?
 - (4) Have you or your spouse, whose 1978 income was reported on the Basic Grant application, been unable to pursue normal income-producing activities for a period of ten weeks or longer during 1979 due to some sort of disaster or disability?
 - ★(5) If you were employed on a full-time basis (at least 35 hours per week) for a minimum of 30 weeks in 1978, are you no longer employed on a full-time basis? This could apply to many students who are returning from the job force to enter school.
 - (6) Have you or your spouse, whose 1978 income is reported when filing for the basic grant, experienced a loss of unemployment benefits in 1978 or 1979?
- If you answered "yes" to any of the above questions,

you are eligible to file HEW Office of Education Form 255-2, Supplementary Form, Basic Educational Opportunity Grant Program. Both forms are then mailed directly to BEOG, PO Box F, Iowa City, Iowa 52240.

The writer has acquired the above information directly from the BEOG office at HEW, not the GMU aid office (they apparently don't have the required forms). You may get them by writing to : BEOG, Box 84, Washington, D.C. 20044. You might also want to ask for a copy of "The Student Guide", which details how the award is calculated.

It should be pointed out that should you decide to apply for the BEOG grant in the above manner, you are still required to fill out the GMU Financial Aid Application, and you should still file the FAF (omitting the BEOG section). In this manner you will be eligible for consideration of other aid programs in addition to the BEOG.

One final point. In order to be eligible for a BEOG award, you must be in a degree/certificate program at an accredited school. Thus, if you are enrolled in another school and merely taking some courses at George Mason, say, through extended studies or as a visiting student, your "home" school must handle your financial aid package.

50% off Sale

SUITS reg. to 199.95 now from \$49.99

(JAYMAR) DRESS SLACKS. 40%OFF

(PURITAN&ROBERT BRUCE) SWEATERS. 50%OFF


WINTER COATS. . . reg. to \$160.00. . . now from \$27.99

FLANNEL SHIRTS. from \$5.99

Zip Lined ALL -WEATHER COATS. . . reg. to \$175.00
 now from \$59.99

JEANS. reg. to \$25.00. . . now from \$12.99

MON -SAT 10-9 SUN 12 - 5 273-4698



Court Clothiers

10312 Willard Way (Rts. 236 & 237) Courthouse Plaza
 703-273-4698 Fairfax, Va. 22030



FRISCO'S

Special Purchase!

Album Cover Mirrors

REG. 12.98 SALE 9.88

\$5.99 NEW ALBUMS \$5.99

Dire Straights-Bee Gees

John Denver

George Thoroughgood

Elvis Costello

Records, Tapes, Posters and Accessories
 At Discount Prices

Located at the University Mall
 across Braddock Rd. from GMU

591-0090

BROADSIDE

ARTS



'Train Robbery', Great Fun And Suspense

By Tom Welsh

Michael Crichton's *The Great Train Robbery* may steal the scene from the other films released in 1979. Every aspect of the movie, sets, photography, acting, action, plot, costumes, and dialogue is outstanding. It is a captivating story, combining great suspense with quality period-piece filmmaking.

The movie centers around a true event—a marvelously executed train robbery in 1850's England. The story has been filmed before; this version however is not a remake but an adaptation of Crichton's own literary account of the crime. The plot is complex but presented in a very clear manner. Crichton also managed to maintain such a high level of suspense that resolutions to some of the scenes prompted loud applause.

The acting is wonderful: the main characters are played by

Sean Connery, Donald Sutherland, and Lesley-Anne Down. Connery and Sutherland appear to take their roles less than seriously but have a grand time doing it. Sutherland's Dickensian rogue is especially enjoyable as is Down's woman of a thousand faces. A cast of supporting actors performs excellently in supplementing the acting of the three stars.

The dialogue is well written throughout the film and quite clever in several scenes. In one scene Connery makes marvelous use of sexual innuendo; he engages in a sometimes less than subtle manipulation of dirty puns that calls to mind Shakespeare's *Merry Wives of Windsor*. This dialogue, along with the frequently tongue-in-cheek acting, points out that *The Great Train Robbery*, in addition to being a suspense tale, is a fine comedy.

The costumes, especially



Donald Sutherland puts the finishing touches on a stolen key.

Down's dresses, were elaborate and beautiful; the attention to detail was noticeable in all the wardrobe. This attention extended to the sets and the recreation of the slums of nineteenth century London. All the details were helped by great camera direction and good color photography. There was one gross flaw; the painted backdrops, depicting London's skyline, were unexcusably poor. Luckily they are apparent for only a brief time and don't detract too much from otherwise well-crafted filming.

Jerry Goldsmith's music was the crowning touch on the film. It was light-hearted when needed and, even in the most suspenseful sequences, maintained a wonderful atmosphere of fun. This is, after all, what is best about this very entertaining movie. Beyond its period-accuracy, and beyond its fine suspense, it is a great deal of fun.

'Chapter Two In The Life Of George Schneider'

By Lisa Siegrist

Neil Simon's *Chapter Two* at the Warner Theater is more than just an autobiographical glimpse into the life of the playwright, even though it was inspired by Simon's meeting his present wife, Marsha Mason, after his first wife died. The play appeals to anyone who has ever had to rebuild the foundation upon which he supports his life. George Schneider, Simon's fictitious counterpart, is widowed after twelve years of blissful marriage, an experience which leaves him shattered and numb. His concerned big brother, Leo, takes it upon himself to play matchmaker and introduces George to women with electric dresses and blue streaks in their hair. George confides that he feels "blind dates are

one of the nation's three leading causes of skin rash." Until George meets Jenny, he has to admit that "Leo's previous social arrangements all ended like the Andrea Doria." Jenny, a recent divorcee, is a similar burnt-out case and wants nothing more than to be left alone. But an accidental telephone call, one of the plays most humorous scenes, ultimately brings them together in marriage after two weeks of idyllic courting. Too perfectly romantic to be true, but evidently it was, at least for a while.

The honeymoon abruptly comes to a standstill. By being happy, George is plagued by feelings of disloyalty to his dead wife. He admits his guilt feelings when he tells Jenny, "It's not supposed to happen twice in a life." Jenny wants only to think of their pre-

sent happiness and carefully avoids confronting the past when her husband has a great need to discuss it. In a heated argument, George tells her, "But you can't get to the present without going through the past." George's guilt also takes the form of resentment. He bitterly admits to his bewildered bride, "I don't feel like making you happy. I resent having to give you everything I've already had." A victim to strong ambivalent feelings derived from his love for Jenny and his sense of loyalty to his beloved first wife, George decides to go alone on a business trip in hopes of getting "unstuck." And true to Simon's propensity for happy endings which we all seem to have a weakness for, no matter how sappy they might be, the glue is not too tenacious to be overcome and George

decides to relinquish his hold on the past.

Despite the serious undercurrent in the play, *Chapter Two* can be considered nothing other than a comedy in the truest sense of the word. Simon bombards his audience with a rapid fire of one-liners, some of which missed their target altogether and succeeded only in winning complimentary forced chuckles. But on the whole Simon's witty repartee, adeptly handled by Jerry Orbach as George Schneider and Marilyn Redfield as Jenny, was genuinely funny, especially the telephone conversations which took up a good deal of the play. Simon has a way of relating to the popular audience by incorporating in his humor mundane, everyday things and events cast in a different light. He can, for instance, make hysterical references to McDonald's or Tylanol, names which we come in contact with all the time.

Much of the humor centers around the antics of Jenny's girlfriend, Faye, and George's brother, Leo, both of whom are unhappily married and looking for something to spice up their lives. Leo laments to his brother, "The trouble with marriage is that it's relentless. You wake up in the morning and it's still there." Their clandestine extra-marital affair is hardly the picture of wanton abandonment. Leo conducts important business calls while in bed with Faye and quiet, tender embraces are shattered by Faye's delicate question, "You've done this a lot, haven't you?"

Jane A. Johnston as Faye Med-

wick did a commendable job of playing Jenny's ebullient, comic friend and was well cast for the part. Her over-permanented hair and somewhat vulgar speech contrasted with Jenny's innocence and wholesomeness. Marilyn Redfield was perhaps a little too pert and bouncy to endure, and her voice seldom changed throughout the entire play. Its constant optimistic tone, created by always ending sentences on a high note, oozed sweetness to an already sappy dialogue. Jerry Orbach similarly never changed his voice from a hoarse growl which when amplified, as in his argument with Jenny, made it appear as though he were about to haul off and slug her. Herbert Edelman as Leo was especially good at giving his character depth and color.

Warner Theater's set for *Chapter Two* consisted of the two apartments belonging to Jenny and George done in a realistic and theatrical style. Shifts in attention were achieved by illuminating whichever apartment the action was taking place. A revolving set of two couches back to back served to divide the two apartments. Scene changes provided smooth transition without interruption.

Chapter Two is typically Simon in the sense that it tends to be sappy, but not to the point of inducing vomiting. Even sophisticates are susceptible to corn now and then, and *Chapter Two* supplies it for even the heartiest appetites in a wonderfully palatable performance.

TWINBROOK
florist

9551 BRADDOCK RD.

FAIRFAX VA.

978-0771

20% STUDENT DISCOUNT

Randy Michener's Electrifying Exhibition



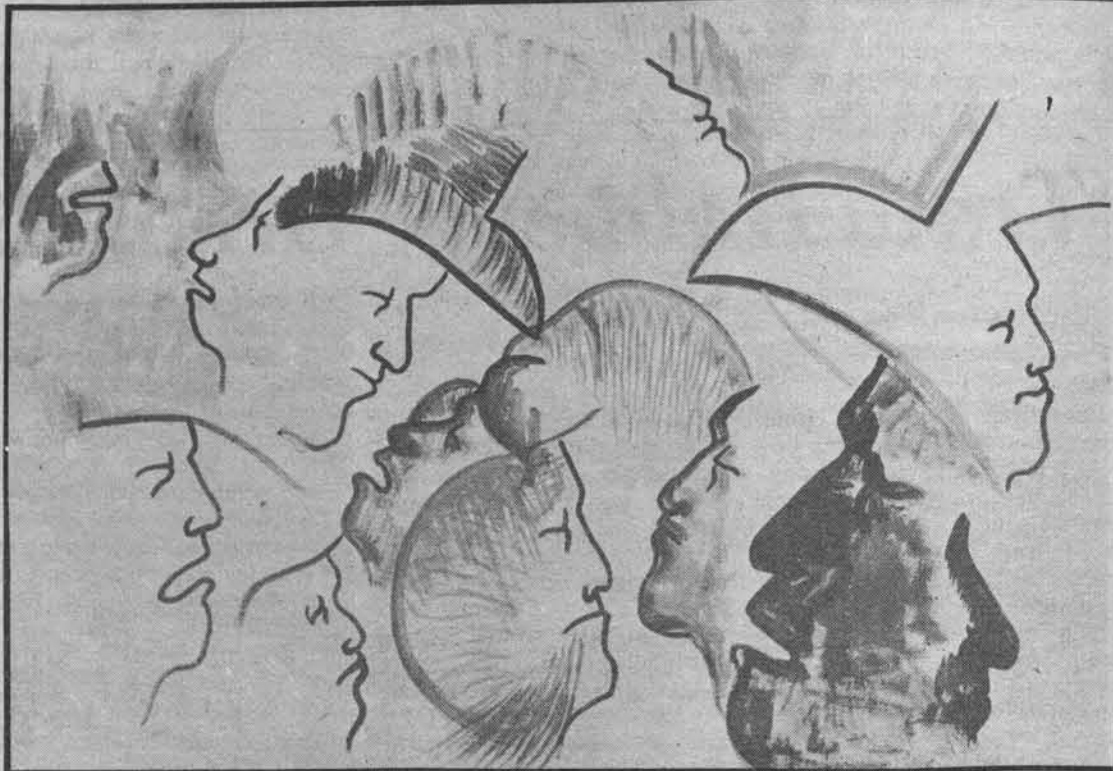
Head-On Collision

By Lisa Siegrist

Adorning the walls of Fenwick library's mezzanine are five years worth of Randy Michener's visual thoughts captured on canvas. Michener's acrylic paintings on display, representative of his most recent work, are the product of the artist's desire to do two things: record memories of his travels and experiment with compositional elements.

The motif found in much of Michener's work is the facial profile, belonging to no one in particular and used as a com-

positional device in his series of profile paintings. This anonymous profile, which most closely resembles that of a prize fighter complete with broken nose and swollen, shut eyes, haunts the viewer with its anguished look. In "Pink Perversion" and "Head-On Collisions," the depthless face bears a horrified grimace, its mouth open in a silent, agonized cry. The profiles painted with a loose, relaxed hand are outlined or filled in with intense, electric colors, often fluorescent orange, hot pink, day-glo green and



Pink Perversion

lavender. Michener employs odd color combinations to provide the most visual contrast. He believes it is virtually impossible to come up with an ugly color combination unless pure hues are muddled with browns. In "Randy Botticelli," a self-portrait of Michener himself and patterned after Botticelli's "Portrait of a Young Man," we are dazzled by a shocking interplay of color, including silver and gold. English

artist Francis Bacon and French painter Enrico Bardi both twentieth century figure oriented artists, have also exerted some influence in Michener's work. Michener does not limit himself to acrylics but works also with pastels, India ink and oils. Surface texture is manipulated by the addition of modeling paste to the paint which serves as a thickening agent. Several of his landscapes, products of his most recent endeavors inspired by his travels, have this textured surface, clouds resembling blotches of smeared toothpaste. The artist has made no attempt, like Matisse, to give depth to his landscapes. Opaque patches of bright, matte hues emblazon his canvases like jigsaw puzzle pieces.

Besides repeating motifs, Michener employs other compositional devices. Discernable in several of his works is the division of pale, opaque hues in the middle

of the canvas. Similarly, not all the canvases are conventionally displayed. "Hokusai Ho-Ho," a landscape of outlandish colors ranging from hot pink to bright yellow, consists of two elongated canvases, one hanging perpendicular to the other. "Madeira Side Show," another landscape with yellow sky and mauve foreground, is actually three canvases mounted diagonally, forming adjacent diamonds.

Randy Michener has been teaching painting and drawing at Northern Virginia Community College's Manassas campus for four years. His artwork will be on display through Feb. 15, and is part of a continuing art show celebrating the talents of NOVA's faculty artists whose work will appear at the Fenwick Library art gallery. The show is sponsored by Walter Kravitz, assistant professor of Fine and Performing Arts.

Divers Do It Deeper At GMU

By Tom Welsh

This weekend's SG film forum presents *The Deep*, the 1977 tale of underwater horror that attempted to follow on the success of *Jaws*; both were written by Peter

Benchley. The film did well at the box office but did not match the success or the quality of filmmaking in *Jaws*.

The film stars Robert Shaw, Jacqueline Bisset, and Nick Nolte, but it is the incredible

underwater photography which ultimately steals the show.

Shaw is very funny but does little more than recreate his role from *Jaws*, that of the colorfully eccentric boat captain. Nolte is terrible, an ineffectual clod who appears to be unaware of acting. This alone is the reason to see the film, particularly if you've seen his outstanding performance in *Who'll Stop The Rain*.

Jacqueline Bisset is adequate and her scuba outfit, consisting of one t-shirt, is partially responsible for the appeal of the undersea footage.

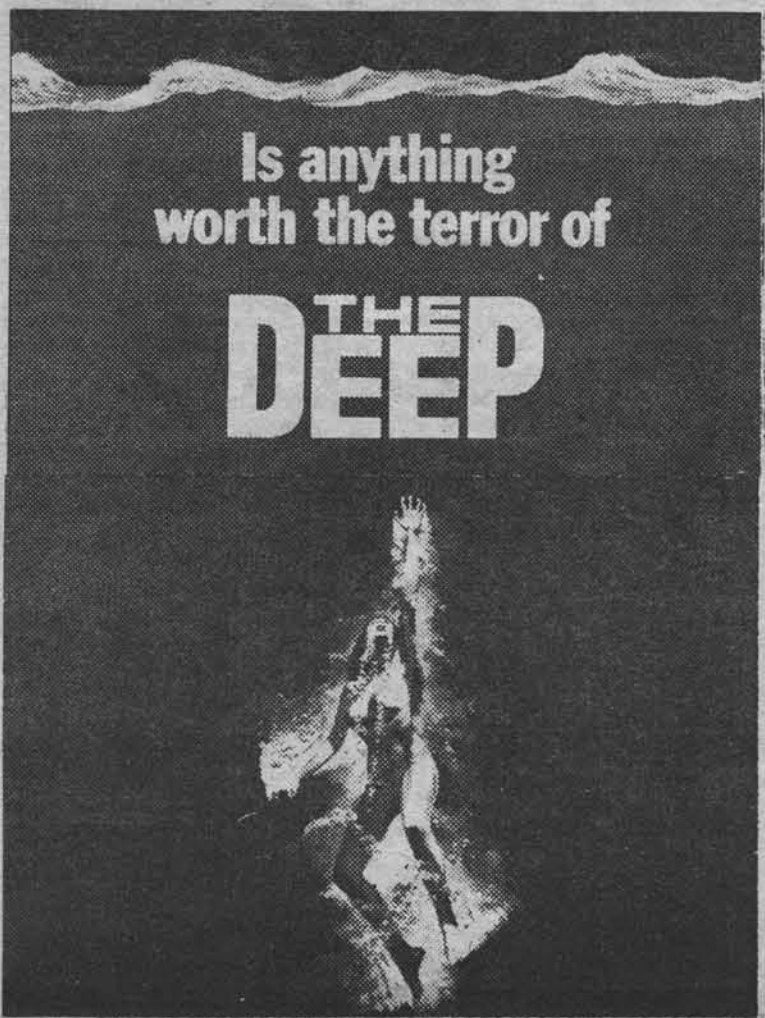
The Deep contains some very good fight scenes, splendid photography, and Jacqueline Bisset—easily worth the cheap admission price.

Showtimes are 7:30 and 9:45 P.M. in Lecture Hall #1, Feb. 16 and 17. Admission is \$1.00 for adults and 50¢ for children.

The Blue Angel, Josef von Sternberg's classically depressing tale of love's destruction, is being screened in the Fenwick Library, February 14, at 7:00 P.M. The showing is in room 209. Admission is free.

This 1930 German film stars Marlene Dietrich and Emil Jannings; their performances are outstanding and provide the main part of the film's timeless appeal. Emil Jannings, as an elderly professor, is led to emotional destruction by a nightclub entertainer, played by Dietrich.

The film also contains Dietrich's theme song, "Falling in Love Again."



On Valentines Nite

the

Library

is the place to check out your love!

The Library

Main Street Chain Bridge Rd.

Fairfax
591-8755

Can't Be Too Old For 'Watership Down'

By Cindy Huguley

Among the rush of holiday films, were two animated movies. One was *Lord of the Rings*, and the other was *Watership Down*. In a time when my only memories of animated films coincide with Walt Disney's re-release of *Pinocchio*, *Watership Down* was quite a surprise. The high level that animation has reached with this film doesn't encourage the viewer to think of it as a cartoon, particularly when you realize the film

could never have been made any other way.

You may never, in good conscience, be able to go rabbit hunting again. If you read the book *Watership Down*, by Richard Adams, you won't be disappointed by the film version.

The film begins with the legend of Ela Farrah and the first animals on the earth. All of the descendants of the first rabbit are condemned to be hunted and killed if caught to pay for boasting.

As the legend ends, (the style of animation used in the legend is different from the rest) the actual story of *Watership Down* begins. It covers a small group of rabbits, with names like Hazel and Bigwig, who leave their warren and travel to safer ground. Contrary to popular belief, or so the movie would have you believe, rabbits live in a highly structured society, with their own form of a city boss, and police force. Some warrens more closely resemble Nazi Germany, but in the story, this is an extreme.

The rabbits flee some unknown dread that is named by a semi-psychic rabbit named Fiver. His older and more sensible brother takes on a temporary leadership of a ragtag group that leave the warren without permission and

are chased by the police force. In their travels to a new home, they encounter different warrens, faced with their own problems. They also discover that all of these dangers are usually created by man. One warren is covered with snares. Something they don't find out until Bigwig is caught in one.

All of the rabbits in the movie are unique individual characters, but they are not the only animals in the film. They make friends with a wounded seagull named Kehaar. Zero Mostel who provided the voice for this particular character has created an image and a mentality in the gruff but well meaning seagull, who frequently refers to the rabbits as "dumb bunnies" a phrase you may never

be able to hear again without laughing. It becomes apparent that the rabbits, now safe in a new warren, have no females in the community.

It is in this portion of the movie that a song, "Bright Eyes," which is done by Art Garfunkel, seems to capture the entire spirit of the film. The soundtrack that was released shortly after the movie is also well done, and is guaranteed to bring back memories of your favorite scene or character.

This isn't the kind of film you have to take your kid brother or child to see. They will enjoy it, but it is definitely something that shouldn't be missed just because you think you are too old to watch *Pinocchio* again.



Applauding Alvin Ailey

By Jodie Musolino

The world renowned Alvin Ailey American Dance Theatre is celebrating its 20th year this season, and they have grown in number spirit and variety. The repertoire is comprised of 28 dancers altogether. In 1958, when the Alvin Ailey gave birth to this company, there were only seven.

The Alvin Ailey American Dance Theatre will be finishing its second and final week at the Kennedy Center Opera House on the 18th. Friday evening's show was an exuberant and dynamic dramatic presentation. It exhibited the unique form of dance that has evolved out of a combination of modern dance, jazz and classical ballet. The form reflects the American heritage, both black and white. Although the pieces were not faultlessly performed, the spirit and emotions were radiated most effectively throughout the three hour long program.

Their first piece, "Streams" was danced steadily with a flowing unity that continued to bring together all the separate sections of the dance. A featured technique here was the high kicking of the leg. At times the dancers' leg

movements were so synchronized they all seemed to be each other's shadows moving in subtle stream-like fashion. "Streams" was the weakest of the dances presented.

"Love Songs" is Alvin Ailey's interpretations of three classic love songs and was danced by Dudley Williams. The audience could almost read his body movements and facial expressions like the words of the songs. It was as if the character's lover who is being serenaded was right there, receiving William's every emotion. His stamina and continuity was amazing.

"Blue Suite" is perhaps Ailey's most famous work to date. It was first performed in the Company's premiere season, twenty years ago. The blues create a mood which is very essential to Ailey's inspiration and expression. It sprang from the fields and brothels of the Southern Negro with songs of lost love, despair, protest and anger. The company performs the Blues as hymns to the secular regions of the black man's soul.

The costumes and decor were magnificent; the ladies wore bright red sparkling dresses and danced in high heeled shoes. Classic blues songs were played by the Bernard Thacker Howard University Orchestra and Choir.

This was a fine highlight of the entire production: everyone was very alive. The piece was arranged by the guest artist for the tour, Brother John Sellars who also did several solos within "Blues Suite."

"Revelations" was also accompanied by the orchestra. It was an intense exploration of the emotions and motivations of black spiritual music which are all songs of trouble, love and deliverance. Donna Wood, the 24 year old dancer who is increasingly visible as the company "star," portrayed a revivalist leader gathering brothers and sisters to rejoice and lament.

The performance concluded with "Rocka My Soul in the Bosom of Abraham." It was a shared feeling among the audience that the show ended too soon.

The Alvin Ailey dancers will be moving aside next week to make room for the famous New York City Ballet. We are very fortunate to have such a rich season of quality dance in Washington. The New York City Ballet will be featuring Mikhail Barishnykov and will be setting up house at the Kennedy Center beginning the 20th for two weeks. These two companies are by far and without a doubt the finest in their classes.

**JANUARY-FEBRUARY
PERM SPECIAL**

20% OFF



**Free Conditioner
with this Coupon**

ACT II HAIRCUTTERS 273-4242

10621-G Braddock Rd.

University Mall, Fairfax

10% discounts for GMU students

**TEMPORARY
EMPLOYMENT
AVAILABLE
IMMEDIATELY
EARN**

\$160.00 TO \$300.00

Males needed as subjects in ongoing drug research studies. Most of our studies require a few days stay here in our research facility located at a major area hospital near the National Shrine. While you are here you can study or just relax. One or more follow-up visits may also be necessary.

Subjects MUST be male, healthy, and 21-45 years of age.

Call BIO-MED, Inc., Monday-Friday 9 AM - 4 PM, at 882-0977 for additional information and scheduling. We are within 30 minutes of all major colleges and universities in the capital region.

Live In the Rat



Saturday 9-12:30

DIAL IT YOURSELF...



...AND SAVE!

35% EVENINGS 69% NIGHTS AND WEEKENDS

Evenings 5 P.M.—11 P.M. Sunday thru Friday
 Nights 11 P.M.—8 A.M. Everynight
 Weekends All Day Saturday Until 5 P.M. Sunday
 first minute, interstate calls.
 Excludes Alaska and Hawaii.

 C&P Telephone

BROADSIDE

SPORTS



Frostburg Tops GMU In Road Tilt

Pats Drop Second In Row

By C. Huguley

The past week was not a good one for the GMU Patriots. Not only did the Pats suffer two losses in three games this week, one of the games was even postponed by the snowstorm that hit the area. Losses against Cleveland State at home and Frostburg on the road, following a road victory last Saturday over Towson, brought the Mason squad's record to 13-7 for the season. With five games remaining, the Pats could finish anywhere from 18-7 to 13-12, but let's not contemplate the worst.

The 77-72 loss to Frostburg State Thursday night was a frustrating one for the Patriots. At one point in the second half, GMU held a 50-43 lead, but then their defense broke down. Frostburg went on an 18-7 tear to take a 61-57 lead with about six minutes to play. The Pats fought back to within one point, 69-68, but a three-point play by Frostburg forward Lew Thomas put the game out of reach. Thomas pumped in 32 points to sink the Patriots, while teammate Greg Seker added 24. David Skaff was the leading scorer for Mason with 18 points, hitting eight out of 13 shots from the floor. Andre Gaddy, GMU's leading scorer this season, was held to 15 points, although he did add 13 rebounds. The Patriots were hurt in the second half when Myron Contee fouled out. Contee failed to score against Frostburg, but he handed out five assists and pulled down seven rebounds. Keith Lewis scored 12 points, as only three GMU players managed double figures. Frostburg's victory gave

them a split of their two games with the Pats this season, each team winning on their home court.

Earlier in the week, the Pats lost a close one to invading Cleveland State, 89-84. Cleveland, another Division One opponent with a winning record, jumped out to a 43-37 lead at the half. Although the Mason team hung tough all the way, their opponent's defense was just too tough. It took 68% shooting from the floor, a Cleveland State school record, to beat the Patriots, who shot 55% themselves. Center Robert Carman led the visitors with 24 points, hitting a torrid 10 of 13 from the floor. Guard Frank Edwards added 18 points on 8 for 12 shooting. Gaddy and Skaff were once again the big two for Mason, with 22 and 19 respectively. Gaddy hit 8 of 10 from the floor, while Skaff hit 9 of 17, mostly from outside. The loss snapped a three-game winning streak for GMU. The team had won eight of its last nine games.

The Patriots' only win of the week came Saturday against Towson State. Earlier in the season, GMU had easily beaten Towson, 87-64, but the Maryland team was much tougher on its own court, succumbing to the Pats only by 66-59. Gaddy again led all scorers with 25. Ellsworth Lewis added 12 and Skaff 10 as the Pats pulled away from a 28-28 halftime tie to register their 13th win of the year. The victory clinched a winning season for the

See BASKETBALL, Page 17



Basketball coach John Linn watches anxiously from the bench. Although the Patriots lost two of three games this week, their win clinches the team's first winning season in three years.

Photo By Eric Leeper

Kathy Kleha: The Scorer

By Bill Rook

It's been a rough season for the Lady Patriots. The team is currently five and nine, and a 94-42 blowout earlier this week didn't help spirits any. One bright spot, however, has been the play of Kathy Kleha. Kleha, a 5'5" sophomore from Robert E. Lee High in Springfield, has led the team in scoring all season. She ranks as GMU's all-time leading scorer for a single season in women's basketball with a total of 225 points in only 14 games.

Kathy is shooting 40% from the floor and averaging a strong 16.1 points per game. With the

additional double-figure scoring of Erin Cloyd and the strong rebounding of Jeannine Nelson, some might expect the team would be doing a little better than it is so far. Kleha attributes this to the youth of the team and the number of new players learning the system. "We've got the talent to become a winning team," Kathy says, "but we just haven't gotten it together."

With five games remaining before the playoffs begin, the team still has a shot at a winning record. "We have a good chance to get to the playoffs if we can get some more motion from the forwards. The guards are doing a

pretty good job, but we need some more speed up front to get the ball where we need it," Kathy explains. "We just need some more experience to start winning consistently."

One of the Lady Pats' biggest problems this season has been a lack of team height, but Kleha's small size is offset by her extremely aggressive play. She has the ability to get the team fired up, and as the team gains more and more experience, the Lady Pats should begin to do very well. GMU's women's basketball program is very lucky to have Kathy Kleha around for another two years.

A February Fantasy: GMU Wins It All

ST. LOUIS, Mar. 24, 1987 — In an upset of stunning proportions, the GMU Patriots of Fairfax, Virginia toppled the Trojans of Southern California from the ranks of the unbeaten to win the 1987 NCAA title. The score was 74-71. Southern Cal had been favored by as many as ten points to win the game, which was played last night in the Checkerdome. The championship was the first for the Virginia school, which entered NCAA Division One only nine years ago. All-American forward Mark Knight scored 26 points to pace the Mason attack. When interviewed after the

game, Patriot coach Myron Contee was ecstatic. "This is the culmination of everything we've been working toward. Our goal

tee's voice trailed off. "If you had asked me at the beginning of the season....." Contee, 29, is the youngest coach ever to direct an

floor play and hot shooting. The Patriots were outscored by 39 to 27, but 56% shooting from the floor was enough to insure the upset victory over the California school. USC, the first undefeated team to reach the finals since Bobby Knight's Indiana teams of the mid-1970's, ended up 30 and 1. The Pats were led by the 6'7" Knight, a consensus All-American this year. Knight connected on 11 of 17 shots as GMU overcame an early 18-11 deficit to post a 34-30 halftime lead. The stocky forward scored 16 of his 26 points before the intermission. In the second half, guards Eddie Cox

and Les Davidson got hot from the outside, and Mason opened up a 12 point lead, 62-50. A furious rush by the Trojans in the final six minutes cut the Patriot lead to one point with 22 seconds remaining, but GMU held on to win. Two free throws by Cox just before the buzzer iced the win, the first national title for any Virginia school. Knight and Cox were named to the all-tournament team, along with Bart Williams and Ray Tobias of USC and Lanny Argenti of Texas.

For the Patriots, it was the cul-

See SPORTS RAP, Page 15

Sports Rap

Mike Rappaport

this year was just to get into the tournament. Winning the East Regional was like a dream come true — no one thought we'd even get that far. And this....." Con-

NCAA champion. He played for the Patriots from 1975 to 1979.

Mason, which finished with a record of 29 and 3, beat the Trojans with a combination of smart

Sports Trivia

Last week's quiz, which was probably the most difficult of the series to date, had three co-winners. Tim Sehrer's was the first entry received, so he wins the hockey tickets, but Chris King and John Haugh also answered eight of the 10 questions correctly. All three are entered in the Super Trivia Quiz at the end of the season for the playoff tickets. Watch for other special offers during the season.

The same two questions were missed by all three winners. No one knew in which sport Tim Small was world champion. Guesses ranged from waterskiing to watermelon seed-spitting, but no one was even close to the right answer—roller-skating. Question six was also missed, although most entries were on the right track. The four players were not on two different championships teams, but all did play in the NBA finals with two different teams.

This week's quiz:

- 1—Under what prominent coach was Maryland football coach, Jerry Claiborne once an assistant?
 - 2—What midwestern university is referred to by the title "cradle of coaches?"
 - 3—Who won the Ivy League championship in basketball in 1901?
 - 4—What are the dimensions of the playing area (length and width) in women's field hockey?
 - 5—One national champion college football team suffered three losses during their championship season. Name the team and the year.
 - 6—Name the first two American universities to field ice hockey teams.
 - 7—In which sport is the Harmsworth Trophy given as a symbol of excellence?
 - 8—Between the years 1967 and 1976, Jay Snoddy won five Master's championships in this sport. Name the sport.
 - 9—What do the Atlanta Braves, San Francisco Giants, Baltimore Orioles and Oakland Athletics have in common, other than the fact they are all major league baseball teams?
 - 10—How many players make up a volleyball team?
- Please submit all entries, complete with name and phone number, to the Sports Editor, BROADSIDE, Room 345, S.U.B., by 5:00 P.M. Thursday. Winners will be announced in the next issue.

Last Week's Answers:

- 1—Ingemar Johansson of Sweden 2—1942, in Durham, N.C. 3—Christine Cooper 4—Oklahoma City 5—Men's roller-skating 6—all played in the NBA finals with more than one team 7—Charlie Harraway 8—Bowling 9—a 7½ minute period in polo 10—play-by-play announcer for GMU basketball on WEEL radio.

Volleyballers Start Strong

The GMU men's volleyball team opened their season at the Penn State Invitational tournament on Jan. 27. One week later they hosted a mini-tournament between UVA, James Madison, Navy, and the Patriots.

GMU opened at Penn State with victories over Cornell, 16-14, 15-10 and Pitt 15-8, 15-3. After dropping two games to Western Ontario, a Canadian team, GMU entered the semi-finals, losing there to a powerful Penn State team, 15-5, 15-10.

Mason opened the first home meet with an easy win over Navy, 15-10, 15-9. James Madison was the next victim of the Patriots, 15-10. After starting slow against UVA, the Pats put their talents together to win easily, 15-6, 15-8. Led by the setting of Dave Rasp and the hitting of John Hughes and Pete Germanis, the Pats had little to worry about throughout the games.

The Patriots took their 5-2 record to the prestigious Pitt Invitational Tournament, Feb. 9 & 10. To get to the finals of this tournament, Mason must get by Pitt, East Stroudsburg, Western Ontario, Kellogg, and Edinborough State. Watch next week's issue for the results.

Head coach John Linn and the GMU basketball officials in preparing slides on the "Mechanics and Techniques of Officiating." The work was begun at the University of North

Carolina, Chapel Hill, NC with the cooperation of Dean Smith and completed on the GMU campus in Fairfax, VA.

The new visual aid will include the changes in the 1978-79 Manual of Officiating authorized by the Collegiate Commissioners Association. Dr. Phil Fox and Norvall Neve collaborated in the production of slides and cards.

Registration is continuing for the second annual Patriot Educational Foundation Sports Collec-

Carolina, Maryland, Virginia, N.C. State, Navy, James Madison and William and Mary.

WNVT-TV (53) will televise GMU men's basketball game on a delayed basis against the University of the District of Columbia (Feb. 20).

INTRAMURALS

There will be a captain's meeting for all teams participating in intramural basketball. All teams must be represented. Meet in the gym at

Sports Roundup

tors Convention on Saturday and Sunday, Feb. 17-18. A limited number of dealers tables are still available. Former major league baseball players scheduled to attend include Walter Masterson, Jackie Jensen, Bill Butler and Mike Wallace. Admission for spectators will be \$1.00 at the door.

Patrick Deegan, a resident of Springfield, VA, has been named interim Director of Intramurals at GMU replacing Mickey Reimann.

Forward Kathy Kleha (Springfield, VA) is ranked fourth among the leading scorers in the Piedmont Basketball Conference of the Virginia Association of Intercollegiate Athletics for Women, averaging 16.1 points per game.

The 1979 GMU baseball schedule has been finalized and includes contests against South

2:00 p.m. Wednesday, February 14. All individuals who signed up for intramural basketball including women should be present. If you cannot attend this meeting, please call Ann (323-2658) in the intramural office.

Schedules are available in the IM Office, room 208, P.E. Building.

Anyone interested in officiating intramural basketball must attend an officials meeting on Thursday, February 15, at 2:00 p.m., in the lobby at the gym.

Schedules are now available in the intramural office for darts. Please make sure you pick one up. Room 208, P.E. Building or room 105 N.C.

Table tennis intramurals will begin February 26. Deadline for sign up is February 19, next Monday.

GAMOO BASKETBALL "BRING A FRIEND NIGHT"

DOUBLEHEADER

On Tues. Feb. 13th The Women & Men Patriots Both PLAY What Promises To Be Exciting Games.

First, The Women Patriots Clash With The Spiders Of The University Of Richmond At 5:00 P.M.

Next, At 7:30 P.M. The Men's Team Challenges The Falcons Of Messiah College.

All Members Of The GMU Community Are Invited To Bring Family Or Friends To These Games For FREE!

Just Arrive Tuesday Night, And Upon Presentation Of Your GMU ID Card Your Party Will Allowed In At No Cost.

Remember, Beer (CHEAP) In The Rat After The Men's Game Until 11 P.M.

SEE YOU THERE

Men's Basketball Statistics

NAME	G	FG	PCT.	FT	PCT.	REB	PTS	AVG
CONTEE, Myron	20	49	.368	20	.444	132	118	5.9
DEEGAN, Greg	20	46	.389	25	.675	37	117	5.8
GADDY, Andre	20	166	.599	74	.698	199	406	20.3
JACKSON, Kevin	19	8	.347	2	.333	28	18	0.9
JOHNSON, Billy	7	0	.000	6	.666	6	6	0.4
LEWIS, Ellsworth	19	83	.446	29	.828	74	195	10.2
LEWIS, Keith	15	78	.503	37	.660	91	183	12.2
MOORE, James	8	0	.000	0	.000	3	0	0.0
McGETTRICK, Mark	20	58	.408	12	.750	32	128	6.4
PEARSON, Steve	17	6	.206	9	.818	14	21	1.2
RANDALL, Gary	17	33	.523	11	.687	48	77	4.5
SCHULTZ, Steve	16	17	.404	8	.615	31	42	2.6
SKAFF, David	18	114	.535	13	.650	76	241	13.4
OTHERS		2	.222	5	.625	0	9	1.5
GMU	20	660	.472	251	.662	771	1571	78.5
OPP	20	602	.452	328	.700	708	1532	76.6

Sports Rap

FROM PAGE 13

mination of a Cinderella story that could have been written by a Hollywood scriptman. GMU's title hopes began when outgoing coach John Linn recruited Knight three years ago. For Linn, now the Athletic Director at Mason, it was a major coup. Over two hundred schools had expressed interest in the Robinson High School star, who was the most-recruited senior in the country. Knight decided to stay in the Washington area because of family problems, and he stepped right into a starting role at GMU in his freshman year, averaging 18.6 points a game as the Patriots won 17 of 25 contests.

Contee took over the next season, and the Pats won their first 14 games. Ranked as high as 13th in the nation at one point, GMU finished with a 21-4 record, gaining a berth in the ECAC playoffs. The Patriots beat Old Dominion in the first round, 78-63, before dropping a 68-67 thriller to Georgetown in the finals. They went on to the National Invitation Tournament in New York, where they advanced to the semi-finals before bowing to eventual NIT winner Minnesota.

The addition of Cox and Davidson for the 1985-86 season gave the Pats all five members of the lineup which won the title this year. Inexperience and an extremely tough schedule cost GMU several wins, but close losses to Virginia and North Carolina on the road let everyone know that Mason was for real. Knight averaged nearly 25 points a game, making most All-American squads, and a 16-9 record against top competition had everyone connected with the team eagerly anticipating this season.

After ten games this year, the Patriots were undefeated and ranked 11th in the UPI coaches poll. George Washington upset

the Patriots, 81-74, in mid-January to hand them their first loss, but Contee's team raced to easy wins in their next eight games for an 18-1 record. The highlight of the streak was a 92-72 win over 6th-ranked Maryland in which Knight scored a school-record 46 points.

GMU entered the ECAC playoffs with a 22-3 record. Two easy wins over Madison and Georgetown put the team into the NCAA tournament for the first time ever. A combination of strong play and good luck put the Pats into the East Regional finals against ACC champion Duke, and the Mason team emerged with a hard-fought 58-56 win to advance to the final four, along with USC, Texas and Michigan.

The luck of the draw pitted pre-tournament favorite Southern Cal against the second choice Wolverines in one game, while GMU faced Texas in the other. It took a tournament record six overtimes to do it, but the Pats beat Texas, 133-131, as Cox hit a twenty-five foot jumper with two seconds remaining. The win set up the final game between Mason and 30-0 USC. The rest is now history.....

Sound far-fetched? It probably is, but February is a good time to dream of future glory. There are those who will say we'll never even play teams of that caliber, let alone beat them. It is hard to think of playing the Carolinas and Dukes of the world when you're losing to Frostburg, but this season is just the beginning. We're in Division One now, and we're winning (14-7 at press time). The next step is building a first-rate fieldhouse, and then we'll be on our way. It could be a long way in the future, but someday there will be big-time basketball at GMU, and after that, who knows?

Women's Basketball Statistics

NAME	G	FG	PCT.	FT	PCT.	REB	PTS	AVG
CLOYD, Erin	11	49	.415	10	.400	7.8	108	9.8
COLLETTE, Patti	14	31	.306	17	.607	2.8	79	5.6
DiMARINO, Theresa	9	8	.533	1	.333	4.4	17	1.8
GALVIN, Shelly	13	16	.326	15	.625	2.7	47	3.6
HILL, Barbara	12	14	.264	5	.714	1.8	33	2.7
KLEHA, Kathy	14	105	.405	15	.714	4.2	225	16.1
NELSON, Jeannine	14	59	.418	21	.477	9.5	139	9.9
ORLANDO, Kathryn	14	45	.360	13	.590	2.4	103	7.3
SALE, Susan	10	14	.333	4	.571	3.0	32	3.2
SHRADER, Denise	10	18	.375	8	.400	3.9	44	4.4
STOKES, Kristin	9	6	.214	0	.000	1.5	12	1.3
WACKER, Sue	13	16	.228	1	.200	3.1	33	2.5
WARD, Karen	14	13	.282	3	.500	2.9	29	2.1
GMU TOTALS	14	394	.359	113	.515	41.4	901	64.3
OPP TOTALS	14	375	.399	216	.582	49.6	966	69.0

DITCH THE BOOKS AND SAVE SOME BUCKS.

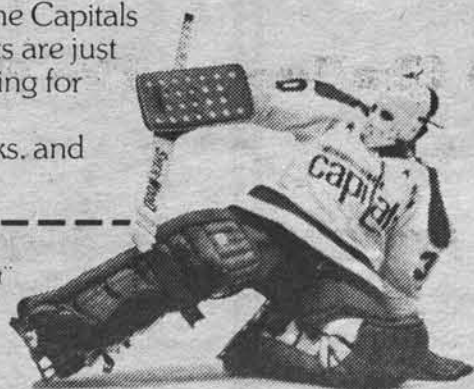
Saturday, February 24, is Washington Capitals "College Night," and you can save \$2.50 or \$3.00 by sending in our coupon.

You'll see the Capitals take on the Buffalo Sabres, and if you're one of the first 5,000 fans you can wear a new knit ski cap home - free from the Capitals.

Our caps are in the Capitals colors and our \$7.50 tickets are just \$4.50, with \$4.50 seats going for only \$2.00.

So close the books, and hit the ice, Saturday night.

Please mail orders to:
Washington Capitals "College Night"
Capital Centre
Landover, Maryland 20786
Make checks payable to
"Washington Capitals," or charge
as indicated.



tickets at \$4.50		tickets at \$2.00	
VISA	EXP. DATE		
MASTER CHARGE			
AMERICAN EXPRESS			
CENTRAL CHARGE			
NAME	CLASS		
ADDRESS			
CITY	STATE	ZIP	
PHONE			

"College Night" Saturday, Feb. 24, Buffalo Sabres 7:35 p.m.
Free knit ski caps to the first 5,000 fans.

Tickets: \$4.50 and \$2.00 with coupon. For more information call 350-3400.

"A Taste of Georgetown in Fairfax"

Open 7 Days a Week
Monday-Friday 11:30 a.m.-2:00 a.m.
Saturday-Sunday 5:00 p.m.-2:00 a.m.

10414 Main Street
Olde Towne Fairfax, Virginia
691-0088

Virginia Cavaliers Take Over Top Spot In Poll

Patriots Ranked Sixth Among Nine Local Teams

By Mike Rappaport

An impressive home-court win over Wake Forest, coupled with a tough, one-point loss to Atlantic Coast Conference leader Duke, moved the Virginia Cavaliers into the top spot in this week's area college basketball poll. Last week's leader, Georgetown, dropped a tight contest against Detroit and fell to second in the area. This week's rankings:

1. VIRGINIA (15-7) The Cavaliers have been playing at less than full strength for almost three weeks, but have still managed to win two of four games against opponents ranked in the Top Twenty nationwide. The return of Lee Raker to the lineup can only help the Wahoos. This team

should be in the national rank-

3. MARYLAND (15-8) It's

Area Rankings

ings, but only *The Sporting News*, which ranks Virginia 16th, has even mentioned them.

2. GEORGETOWN (18-4) The Hoyas have the best record in the area, but they haven't had the tough schedule Virginia has had to play. Recent losses to Oral Roberts and Detroit have left many wondering whether John Thompson's team is really as good as they thought.

been all downhill for the Terps since they knocked off Notre Dame two weeks ago. The young Maryland team has been incredibly inconsistent, making turnovers constantly in crucial parts of the games they lose. On sheer talent, Lefty Driesell's team should be number one, but they don't seem to win when they have to.

4. GEORGE WASHINGTON

(11-10) The Colonials continue to struggle around the .500 mark. GW's best hopes are to get healthy and then to get hot during the Eastern Eight tournament.

5. AMERICAN (13-10) The Eagles miss Stan Lamb. Boo Bowers has not been able to carry the scoring load by himself, and the team's defense is slipping as well. AU opponents have scored 303 points in the team's last three games, and that's not winning basketball.

6. GMU PATRIOTS (14-7) The Pats stumbled this week, with losses against Cleveland State and Frostburg after a win against Towson. The Towson game clinched a winning season for the

GMU team, their first since 1976.

7. HOWARD (13-9) The Bison beat North Carolina A & T this week, and showed well in handing the A & T squad a 66-65 defeat. A & T handed the Pats their worst defeat of the season in early January, 88-60.

8. NAVY (10-12) Not much changed for the Middies this week. It's still an up-and-down season for the crew from Annapolis.

9. CATHOLIC (4-16) The Cardinals lost a tough game to small-college power Wagner College this week, their sixteenth loss in 20 games. This team isn't going anywhere at all.

LEADERSHIP TRAINING THIS WEEK

DROP IN SESSIONS (1 Hour)

Wed., Feb. 14, 4:00 PM - How to Foster a Dynamic Student Organization - Stud. Union Rm F

Thur., Feb. 15, 2:30 PM - How to Foster a Dynamic Student Organization - North Campus Rm 226

sponsored by
Student Activities Office

All you can eat
Lunch and Dinner
Buffet



LUNCH BUFFET \$3.25 4 Courses

Starts 2/18/79 DINNER BUFFET \$5.99 5 Courses

SOUP SALAD BREAD & BUTTER

Roast Beef

Country B-Q Ribs

Kung Pao Chicken

Sweet & Sour Shrimp

Roast Pork & Fried Rice



THE KINFOLK RESTAURANT

Located in Fairfax Mall across from North Campus

Lunch Buffet daily except Saturday

ATTITUDE adjustment hour
along with FREE HOR D'OEUVRES
4 to 7 Daily in the Lounge
Live Entertainment

20% Discount to All GMU students

Spa Elite For Women

Invites you to
one free week.



- If you don't watch your figure no one else will

- Start the new year with our special low rates
3.50 per week within jogging distance of campus

- Open 6 days a week
- Individualized programs set up for you by prof.
- Slimnastics classes (hourly)
- Finnish rock sauna
- California hot tub/whirlpool

- Individual showers
- Lockers and dressing booths
- Vanity beauty bar
- Nutritional guidance/
- Self improvement courses

Call 273-7955

10368 Democracy Lane Fairfax,

SPECIAL
COUPON
WORTH

\$20

This Pass Is Worth \$20.00 Towards The Purchase Of Regular Membership Or 1 FREE WEEK!

Theresa DiMarino: GMU's Potential Olympian

What do kayaking and basketball have in common? For one thing they are both sporting events found in the Olympic games. For another, they are both sports loved by Theresa DiMarino.

Few athletes have been able to reach perfection in two sports, especially two sports so unlike. DiMarino recognized this four years ago when she decided she wanted to participate in international competition and in the 1980 Olympics in Moscow. Her choice — flatwater kayaking.

"Ever since I started kayaking, I've gotten more and more interested in it and studied it harder and harder," said the 19-year-old GMU freshman in explaining her choice. DiMarino started kayaking at age 12. "I was taking swimming lessons one day when this lady, Gloria Pierre (1964 Olympic silver medalist in Kayaking), came in and recruited me and 40 other people," she recalled. "Today only two of us are still kayaking."

Since she began her intensive

kayak training in 1975 under the guidance of Coach Jack Broshias, a 1972 Olympian, she has participated in the 1977-78 National trials in Ohio, winning the K-4 (four person kayak) competition and placing in the K-1; the 1977-78 Mid-West Sports Festival in Denver, Colorado, open to all Olympic and potential Olympic athletes; the 1977-78 National kayaking competition in Liverpool, NY; and the 1977-78 International Kayaking Competition in Vichy, France, where she missed winning a medal in the K-1 event by three seconds. As a result of her accomplishments in these and other 1977-78 competition, DiMarino is now ranked sixth in the nation in senior competition for the 1978-79 season.

This success in kayaking has not dampened her fondness for basketball, and after entering GMU this semester, the Mount Vernon High School graduate and former varsity basketball All-Regional decided to try out for the Patriots women's basketball team.

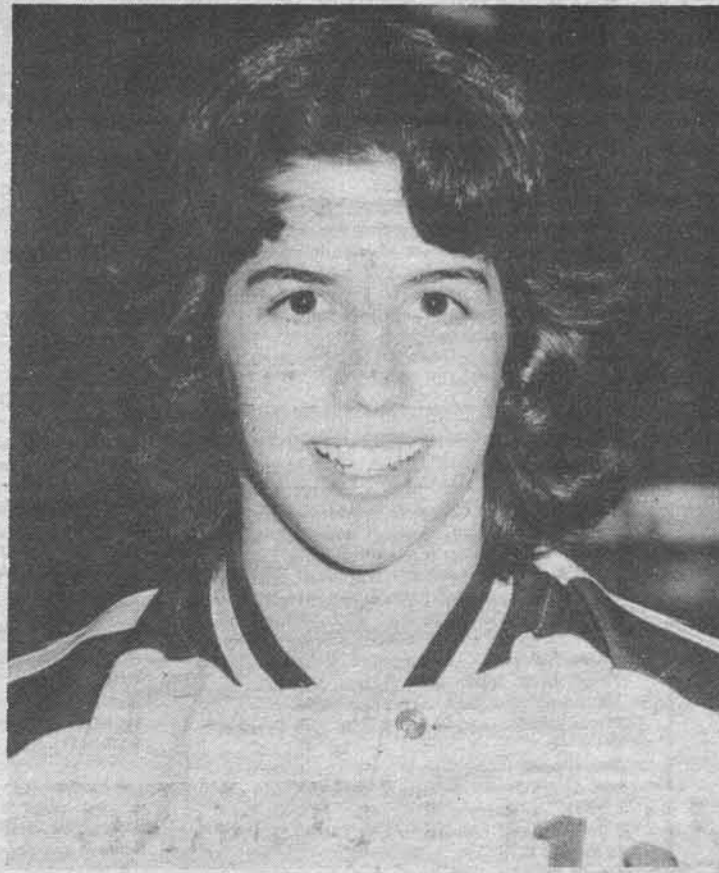


Photo By John Hurley

Theresa DiMarino, a 19-year old freshman at GMU and a member of the Lady Patriots' basketball team, is also a leading candidate for the Moscow Olympics in kayaking.

"I had to give up a lot when I decided to train for the Olympics," said DiMarino, now a second string Patriot guard, who is already a semester behind in college because of her kayaking career. "But I was lucky to have a (kayaking) coach who knew me and understood that I loved basketball too. Because of my intense training (in kayaking), I don't play basketball as well as I could or would like," she admits with no hint of regret. "I don't practice it as much, but it gives me a diversion from kayaking in the winter," she continued. "And without it I probably couldn't give as much of myself as I do when I train."

Besides playing basketball in the winter to stay in shape DiMarino lifts weights regularly, does isometric exercises and trains in her kayak four nights a week on a 2,000 meter indoor course used for testing ships.

From spring through fall when DiMarino, a member of the Washington Canoe Club, is not racing competitively, she can be found training on the C&O Canal.

Basketball

FROM PAGE THIRTEEN

Mason team, their first in three years.

After a late Saturday home contest against Mount St. Mary's, the Pats journey tonight to Randolph-Macon, as they attempt to make it two in a row

over a team they had never beaten prior to this season. In a piece of unusual scheduling, GMU plays its third game in four nights when they take on Messiah College at home tomorrow night. After these three games, there are only two other contests left in the season; a road game against James Madison on the 17th, and a home contest against UDC to finish out the season Tuesday.

Tomorrow's game against Messiah matches the Pats against one of the top NAIA teams in the country. At press time, the Falcons had parlayed a well-balanced scoring attack into a 17-2 record. Three of their starters average better than 15 points per game.

COLLEGE STUDENTS! FREE ROOM AND BOARD... SAVE YOUR \$\$\$

The Student Housing Referral Service, Inc. can help you. We'll place you in a conveniently located private home. You pay no room and board in exchange for one of the following:
Light housekeeping
Gardening
Care of the elderly
Child-sitting
while you complete your college education. Call or write today:
(202) 659-0755
The Student Housing Referral Service, Inc.
1625 Eye St., N.W.
Suite 527
Washington, D.C.
20006



LESLIE

I love you.

Happy

Valentine's Day

Mike

Collectors Converge

On Saturday and Sunday, Feb. 17 and 18, the Patriot Educational Foundation will host their second annual Sports Collectors Convention at GMU.

Over 45 exhibitors have registered for the convention, where all types of sports memorabilia will be on display. The emphasis is on baseball and includes card collections, old uniforms, other collectables and appearances by some former major league baseball players.

The Alexandria Mariners baseball club will be represented at the convention and will have material

left from the Alexandria Dukes up for sale.

This convention will once again be the largest of its kind in the metro area and offers a great opportunity for traders, buyers, sellers and browsers.

The Convention will run from 11:00 a.m.-8:00 p.m. on Saturday and 11:00 a.m. until 6:00 p.m. on Sunday, in the GMU Health and Physical Education Building. Admission is \$1 at the door, with all proceeds going to the Patriot Educational Foundation, a non-profit organization. For further information call 323-2320.

WITHAM'S Floral Designs



FTD LoveBundle Bouquet.



FREE Bunch of Daisies for you when placing a valentine order.

3214 Pickett Rd. 591-2910
Fairfax Circle opp. Memco
Daily Deliveries to entire Metro Area

CURLS-FACIALS-WAXING-COSMETICS-HAIR AND SKIN-

shear genius

10% DISCOUNT

TO GMU

STUDENTS

WITH THIS AD

**MONDAY-FRIDAY
9 AM-8 PM
SATURDAY
9 AM-5 PM
978-7778**

9577 Braddock Road

Twinbrook Shopping Center

David Lowe G.M.U. class of '72'

SHAMPOO AND SETS-JIRMACK-HAIRSTYLING-COLOR AND CURL-

Classifieds For...

...Your Information

Attention all you interested in space. There will be an Astronomy Night, Wednesday March 7th at 8:00 P.M. in Lecture Hall 1. A movie & slide show will be presented along with a lecture on colonization and industrialization of space by Jesco von Puttkamer. Dr. von Puttkamer is technical advisor for the new Star Trek movie & long range planning manager for NASA. For more information call Kirk at 893-3612. Admission is free. Y'all come now. Hear!

Lost: woman's gold-colored watch with loose clasp. If found, please call Becky at 860-8896. Reward.

Monday Feb. 12

Orientation to the job market: Noon to 1 P.M., Conference Rm. F, Student Union Building. One hour session presents an overview of career planning and job hunting approaches.

Hispanic-American Student Alliance. Organizational meeting, February 12, at 6 P.M. in the Student Union, Conference Rm. A. All interested please come.

Stress Management For Students - 1 to 2:30 P.M., six Monday sessions. This seminar is designed to examine the effect that stress has on our lives and what we can do to reduce its harmful effects. The emphasis of the group will be on learning methods of coping with stress by reducing tension, eliminating events that can cause stress, and managing more effectively the usual life stresses. There will also be an opportunity to use biofeedback in relaxation training. Free to GMU students. Sign up at the Counseling Center, Room 364, Student Union, or call 323-2165 to register.

Tuesday Feb. 13

GMU Outing Club-Meeting at 6:30 P.M. in Student Union Building, Rm. A. Upcoming trip: ice skating-Sun. Feb. 18. Call Jerri at 971-1230.

International Students-1:00-2:00 P.M., four Tuesday sessions. An informal group where International Students can meet and form a common bond for understanding and coping with cultural adjustments. We will focus on developing the skills necessary for academic success. Free to GMU students. Sign up at the Counseling Center, Rm. 364, Student Union, or call 323-2165 to register.

Eliminating Self-Defeating Behaviors-7:00-9:00 P.M., four Tuesday sessions. Self-Defeating Behaviors (SDB's) are habits, fears and negative attitudes which prevent you from achieving your personal goals. In this workshop members will participate actively to identify SDB's and learn systematic ways of eliminating the. Free to GMU students. Sign up at the Counseling Center, Rm. 364, Student Union, or call 323-2165 to register.

Wednesday Feb. 14

Assertiveness Training I group scheduled for Wednesday, Feb. 7, is rescheduled for Feb. 14, same place, same time. Counseling Center, Rm. 364, Student Union Building.

GMU's Department of Foreign Languages and Literatures and Division of Continuing Education present "Sophocles' Antigone" performed in English by Dr. Peter D. Arnot's Famous Marionettes, 2:30 P.M., Lecture Hall 1.

Monday February 19

Orientation to the Job Market: Noon to 1:00 P.M., Conference Rm. F, SUB.

Returning Women Students: Guilt feelings about changing roles, taking time to study, spending money on YOUR education, and spending less time with your family are among the common concerns we discuss every WEDNESDAY. Why not bag your lunch? Join us anytime between 12 and 1 P.M., room 364, Student Union.

Latin American Studies Discussion Group. First meeting of semester held on Feb. 14, 1979 in Room E Student Union from 7-9:30 P.M. After a brief business & planning session we are pleased to welcome Lt. C. John Child, Ph.D., to speak on "Geopolitical Thinking in Latin America." Presently a Faculty member of the InterAmerican Defense College, Ft. McNair he has travelled & worked extensively in Latin America. All those interested please attend.

Ski Club Meeting: 1:00 in Music Room 11.

Orientation to the Job Market: 1:30 P.M. to 2:30 P.M., Conference Rm. F, Student Union Building.

Resume Writing Workshop: 1 to 2:30 P.M., Conference Rm. E, Student Union Building. Purpose and content of the interview and the importance of specific preparation are covered.

Training session for student leaders on how you can foster a dynamic student organization. Student Union, Room F. Sponsored by Student Activities Office.

Ski Trip to Blue Knob - Lift tickets \$5, Rentals \$6. See bulletin board outside of Student Union room 304 for meeting instructions deadline for sign-up: Tuesday Feb. 13 3:00 P.M.

Psi Chi Honor Society Meeting. All members are requested to come. Certificates will be handed out. 2:00 P.M. Room 4504 Robinson.

Training session for North Campus student leaders on how you can foster a dynamic student organization. North Campus Room 226. Sponsored by Student Activities Office. 2:30 P.M.

Friday Feb. 16

Loneliness - 10:00 A.M. to 3:00 P.M. A one-day workshop offered by the Counseling Center,

room 364, Student Union Building. Register in the Counseling Center room 364, or call 323-2165 to register. Feelings of loneliness, lack of friends and isolation can make college life stressful and disappointing, and can interfere with the student's academic and professional goals. The experience, effects and potential value of loneliness will be explored, along with ways of coping with and eliminating loneliness.

Saturday Feb. 17

GMU's Department of Foreign Languages and Literatures and Division of Continuing Education present "Sophocles' Antigone" performed in English by Dr. Peter D. Arnot's Famous Marionettes, 2:30 P.M., Lecture Hall 1

Monday February 19

Orientation to the Job Market: Noon to 1:00 P.M., Conference Rm. F, SUB.

...Sale

Yashica Mat 124 G camera w/wide & telephoto lenses, "L" bracket, close up lenses, 12 filters, Vivitar strobe, leather & aluminum cases. All new equipment. New price \$395, will sell for \$225/offer/trade. Call Barry at 281-3316.

Bogen T35 enlarger w/lens, bulb, color filter tray; 3 11 x 14 trays; beakers, storage bottles, developing tank, all chemicals & accessories. Never been used. New \$126, will sell for \$80/trade/offer. Call Barry at 281-3316.

Photo flood lamps, set of 4. \$10. Call Barry at 281-3316.

Jensen pack, large, slightly used. This is the original design Jensen soft pack. New \$85, will sell for \$35. Call Barry at 281-3316.

"Do your best! Prepare for LSAT, GRE, GMAT or PACE. Prep Courses 588-6994."

Music for your dance or party is what I'm all about. Hi, my name is DOUG and I'd like to provide my sound system, recorded music and disc-jockeying for your entertainment. Please call 949-5699 anytime. Thank you.

College Week in the Bahamas. March 10-17. From \$269. Book now! Intercollegiate Holidays 265-9890.

Adventureworld. Worldwide travel programs for the 18-30 generation. Call for details and free brochures. Inter-Collegiate Holidays 265-9890.

Bass player and guitarist seek keyboardist and drummer into progressive rock and jazzrock. Please only serious musicians only. Call Rick after 5 P.M. 323-7390.

'74 Toyota Corolla Deluxe, 4 dr, radio and heater, Metallic gray. Good shape. Book value \$1200, will sacrifice for \$1100. 250-6227.

Oldsmobile-F-85, custom 1964, running condition \$75, after 6 P.M. Tel: 938-0864.

Persian, prayer-rug \$350, Buchara, tel: 281-0151, after 9:30 P.M.

Yamaha guitar with case never used. \$315. 281-4029.

Smith Corona Electric portable typewriter with case. \$85. 281-4029.

Annandale-Roomie needed to share 2 br. house w/25 yr. old GMU student. Prefer conscientious person. \$100 plus utils. 941-1501 or 573-3105.

Save \$100 or more - PA system, 2 vertical speakers, 20 watt amplifier, mike w/stand, used only once, excellent condition. Sale priced \$120 or best offer. Call 751-1318 after 6:00 P.M.

Alvarez jumbo deluxe western guitar. Rosewood fingerboard, mahogany body, 4-way adjustable rosewood bridge. Plush lined case and extras, new \$265+, will sell for \$175, ask for Tom, phone 323-8609.

AMC-Matador, '73, power steering, automatic trans., small V8, \$950 negotiable, call Steve at 273-6634 (home) or 323-0246 (work).

Save gas and buy a 1975 Volkswagen Rabbit four door sedan automobile, 2 snow tires rims, AM-FM-Cassette player, less than 40,000 miles, excellent body and running condition for just \$1900. Call Tuan at 323-2637 (day) or 243-1742 (night).

Wanted: Roommate to share 2 bedroom apartment. \$125 month, utilities included, must be over 21 yrs, 10 minutes from campus. Call Linda at 323-6223 or 347-0354.

...Employment

Hard-working individuals wanted for part-time work in Tyson's Corner to assist in warehouse. Good pay, flexible hours. Call Mr. Wilson, 971-5300 for appointment.

Wanted: lead guitarist w/vocals to complete commercially oriented group, material ranges from top 40 to progressive jazz (Steely Dan, Tony Williams ELP, etc.) Call Lee at 620-4559 leave message.

Part-time help wanted, 20-40 hours/week. Flexible. Light Manufacturing Co. Call for details. 573-1113. Top notch industries.

Cooperative Education Program - Opportunities for students to begin professional careers while still in college. Current vacancies are: **Personnel Staffing Specialist** - Personnel Man-

agement (Office of U.S. Civil Service Commission) Soph. or Jr.

U.S. Customs Inspector. U.S. Customs Patrol Officer - U.S. Customs Service, Law Enforcement Major. Must have at least 24 hours of coursework remaining before completion of degree requirements.

Financial Analyst - U.S. Farm Credit Administration. MBA student with knowledge of bonds, credit banking and investments.

Business Management - Mitre Corporation. Soph. or Jr., Minimum 3.0 GPA. For information regarding the above opportunities contact the Cooperative Education Office Room 303 SUB, 323-2535.

FEDERAL SUMMER INTERN PROGRAM

General Requirements: All interns must have completed at least 60 semester hours or be a graduate student. Undergraduates must be in the upper third of their class and graduate students must be in the upper half of their class. Individual internships may have more specific requirements and are outlined in vacancy descriptions. Additional information and application forms are available in the Cooperative Education Office, Room 303, SUB. Deadline for completed application forms is February 26.

Federal Prison Systems - Computer Intern, partment of the Treasury - Computer Programmer. Must have six hours in computer science and six hours in accounting with majors in computer science, mathematics or business.

Department of the Treasury - Management Analyst. Must have degrees in industrial engineering, business or other related fields and 12 hours in accounting.

Department of the Treasury - Personnel Staffing Specialist. Must have degrees in personnel administration, industrial relations, psychology, the social services or some other related field.

Department of the Treasury - Budget and Account Analyst. Must have at least twenty-four hours of business, accounting, mathematics, or other related subjects.

Department of the Treasury - Accountant. Must have twenty-four hours of accounting.

Department of the Treasury - Computer Programmer. Must have six hours in computer science and six hours in accounting with majors in computer science, mathematics or business.

Defense Logistics - Business or Public Administration.

Defense Logistics - Mathematics and/or Computer Science.

Department of Labor - Management Assistant. Junior or Senior majoring in Business Administration or Political Administration or Political Science.

Civil Service Commission - Personnel Psychologist. Must have one year of graduate study in the field of Industrial Psychology or Personnel Psychology.

SENIOR PLACEMENT INTERVIEWS: Students wishing to participate must register with Career Services by filing a Personal Data Sheet with the office. Full recruitment schedules are attached to the back of Job Mart, the office newsletter which is published the first of every month. February issue now available.

ORTHO PHARMACEUTICAL CORP: February 20, North Campus. Sales Representatives for Pharmaceutical Division of Johnson & Johnson. Degree required, Business Administration or Science preferred.

U.S. MARINE CORPS: February 20, 22, & 23. Main Campus. Interviewing for Officer Training. Table and representatives in Student Union Lobby.

ONYX CORP: February 21, Main Campus. Entry level program analysts. Degree required in Economics, Math/Stats, Physical Science or Business Administration, Social Science with strong quantitative abilities.

JOHNSON & JOHNSON BABY PRODUCTS: February 21, Main Campus. Interviewing for sales representatives to merchandise and sell baby products to retail food and drug trade. Degree required, all majors.

WOODWARD/LOTHROP: February 22, Main Campus. Interviewing for management and merchandising trainees. Degree required and previous retailing experience.

GIANT FOOD: February 22, Main Campus. Interviewing for retail food management training program. Degree required, preferably in Business Administration.

...People

Caggy One: When will you meet me in the pool? JEEL

OXMEN: Thanks for everything! Mai Tai

My Little Schizophrenic: Here's to a new start - Smile more & be happy. The Snot

JTV - Happy Valentine's Day Sweetheart!! Lots of love, Jen xxoo (redeemable!)

B.S.: Happy Valentine's, Happy Birthday, and a very happy 5th. J

L.J.L.: Birds of a feather do flock together. L.B.A.

To Mike and the GMU Fencing Team - Happy Valentine's Day! Best wishes. Heidi (the dart destroyer)

To the N.Y. Aquarian - I lust for your body, I yearn for your face, I want all of you now, and for the rest of my days! Your friend, ITK's dizzy blonde

Man From Oompah: I don't know about Fred, but the tavern and candles await us at Wm's. Is tomorrow O.K. with you? Happy Valentine's Day, love! Hay Boo Boo

Beth Ann: Happy B-day and have one on me! How about Fritzie's again one of these days? S.

Kiddo: Others hear - you listen. Thanks. Happy Valentine's. Impulsive

Andra: My sweet little shrimp. Would you care to get fried? The fishy fellow.

L.S.: Oh Well! - P.W.

To Murphy's Misstress: I need to lose weight. Do you think a seafood diet will do the trick? Jim

GHB: To you, for Valentine's Day, I give all my Love, the rest of my life. Love, Scott, R.O.S.B.

Happy Birthday last Friday and Sunday Phyllis and Cathy! DOC

Trainwreck: I don't see how you can do it with a nickel, I can't even fit a dime in my belly, but-ton! Cold Tuna

The Director of Genetic Control is announcing a revival of that old favorite, "Southern Dish is in LUST."

Barbie Doll, will you be my valentine? Only 2 days left! Love, J.M.D.

To My Teddy Bear: May this Feb. 14 be very special to you. Will you be my valentine? Love, Your Baby-Cakes

Snookie: Have a happy Valentine's Day. Maybe your Baby-Cakes too.

H.R. Puf-n-Stuf, c/o Mr. Roger's Mailbox: Ugh. You Good Man. Me want Mike. You eat dinner. Play football. Drink Beer. AAARGH.... Cave Woooman

Hay Boo Boo: Even though it's your turn... Happy V-Day! All my Love, OOMPAH

Stephanie (alias Sissy F.F.): A... B... C... S!! It's been a real raisin bagel experience. From one craver of affection to another - I'm hooked. We may not be disco-ing but we're jammin'!
Initiator of the Catholic JAH movement, A. the C.W.

Barry and Andra: There's only two things in this world that taste like fish... and one of them's fish. Friend of the fishy fellow

Andre: 30 points? Can you do it? And if you do get the 30... what happens then? Maybe a free jump shot? Pretty Baby

Southern Dish: What?? Are you IN LOVE?? Do you mean there will be no more lewd, crewd, and socially unacceptable comments in BROADSIDE addressed to... no more darts?

Jim Willoughby: So you've won many trophies... do you keep them in your room??? If so, don't you have any room for your teddy bears? Pretty Baby

Euch and Rock: To that wild and crazy kinda team... should we announce pebbles soon?

Here's what the Critics say about P.J. Skidoo's:

"I think P.J. Skidoos is Delilah." - Samson

"Let me make it perfectly clear, this is the place to go. Even Checkers enjoyed it. Thank you." - R. M.

**"Fantastic: Best SOS I've tasted since Nam."
- Staff Sergeant W.W. Brown Chief Field Cook
3rd U.S. Infantry U.S. Army**

"This is a great place." - Alfred E. Neuman MAD Dining Guide

**"Even though I couldn't get in because I didn't have a driver's license, it looked like a great place."
- Leon Spinks, Former World Heavyweight Boxing Champion**

**"Best garbage I've ever eaten."
- Captain Willie Bird
NYK Sanitation Division**

**"Truth, Justice and the American way. It is just super here!"
- Superman**

**"Hey! P.J.'s I like your food and your style. Now get out of here!"
- William Murray**

"Nice place! Food much better than whale blubber. Drink much better than sea broth. Much enjoy!" - Nanook of the North

**P.J.
Skidoos®
FOOD & SPIRITS
The American Way**

P.J. recommends that gentlemen wear a sport coat on Friday and Saturday evenings.